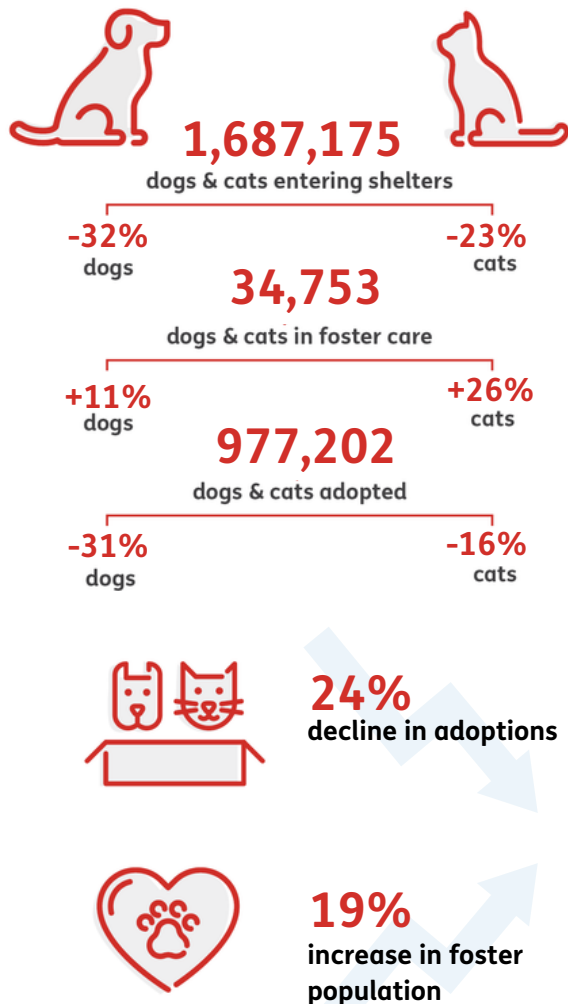


As the world navigates through a new reality, our pet population remain vulnerable an in-need.

Despite temporary closings and reduced shelter capacity, at least 1,687,175 new animals have arrived in the 1,191 shelters monitored by the 24Pet ShelterWatch Report since the start of the pandemic. This number is expected to surge in the coming months with an anticipated increase in relinquished and abandoned animals.

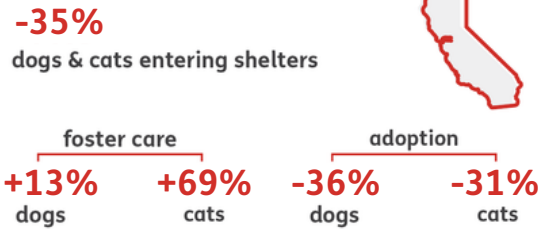
March 14, 2020 - March 12, 2021 compared to the same period previous year

US NATIONAL STATS

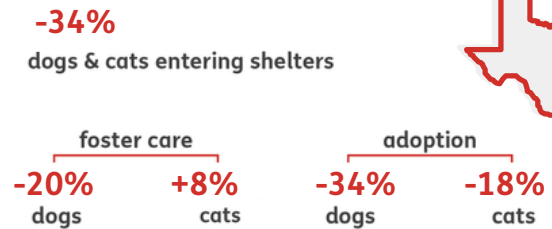


STATS BY STATE

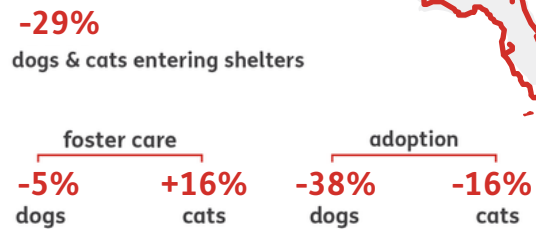
CALIFORNIA



TEXAS



FLORIDA



Pethealth Services (USA) Inc. ("24PetWatch") strives to provide accurate and up-to-date material on this 24Pet ShelterWatch Report (the "Report"). 24PetWatch assumes no responsibility or does not guarantee as to the accuracy or timeliness of the material provided in this Report. Neither 24PetWatch, its employees, officers, directors, agents, parent companies or subsidiary companies assume any liability or responsibility for any errors or omissions on any information provided within this Report.