

Week 26: September 5, 2020

The 24Pet® ShelterWatch Report: COVID-19 Impact report is a weekly gauge of U.S. homeless pet populations in the care of animal welfare organizations.

The COVID-19 Impact Report aggregates data from 1200 animal welfare organizations (“AWOs”) in the United States. It compares the weekly data to data from the same week in 2019.

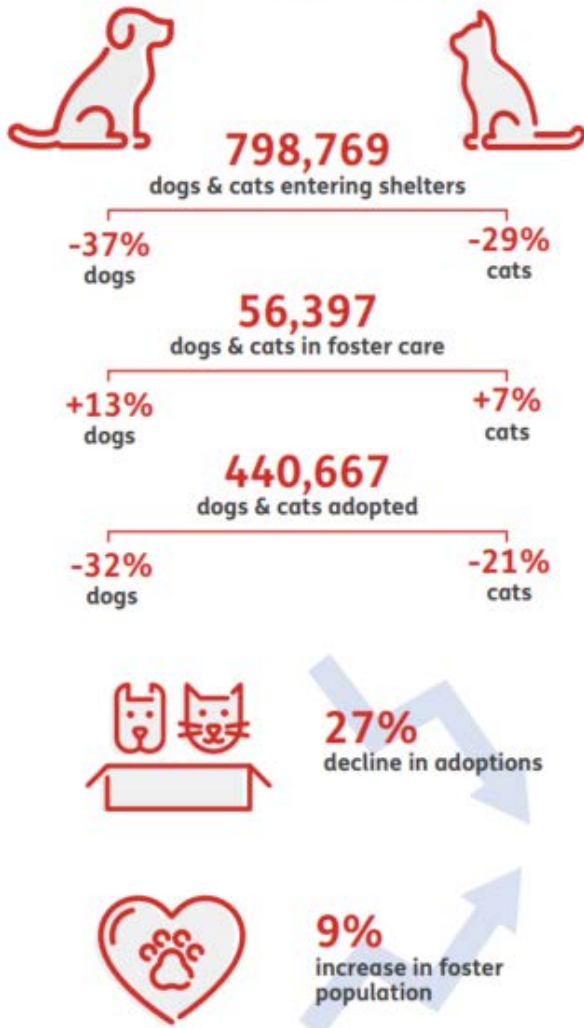
For the purposes here, AWOs are defined as animal control agencies, SPCAs, humane societies and rescue groups. Only data from AWOs operating PetPoint during both January 1, 2019 to current have been included. For commentary see: <https://pethealth.force.com/community/s/blog>

As the world navigates through a new reality, our pet population remains vulnerable and in-need.

Despite temporary closings and reduced shelter capacity, at least 798,769 new animals have arrived in the 1,191 shelters monitored by the 24Pet® ShelterWatch Report since the start of the pandemic. This number is expected to surge in the coming months with an anticipated increase in relinquished and abandoned animals.

March 13 - September 11, 2020 compared to the same period in 2019

US NATIONAL STATS



STATS BY STATE

CALIFORNIA

-35%
dogs & cats entering shelters



TEXAS

-37%
dogs & cats entering shelters



FLORIDA

-34%
dogs & cats entering shelters



Pethealth Services (USA) Inc. ("24PetWatch®") strives to provide accurate and up-to-date material on this 24Pet® ShelterWatch Report (the "Report"). 24PetWatch® assumes no responsibility or does not guarantee as to the accuracy or timeliness of the material provided in this Report. Neither 24PetWatch®, its employees, officers, directors, agents, parent companies or subsidiary companies assume any liability or responsibility for any errors or omissions on any information provided within this Report.

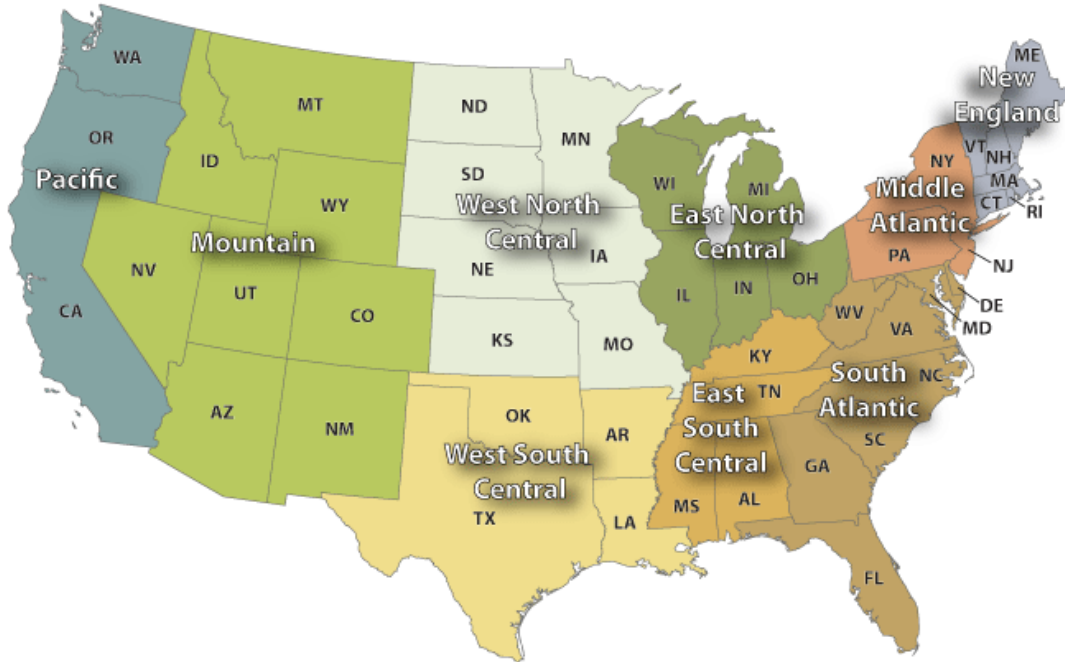
NATIONAL:

	Intake Operation	Cat		Dog		Total		Same Week 2019		
		Total	YoY	Total	YoY	Total	YoY	Cat	Dog	Total
Intakes	Total	17229	-28.3%	13808	-37.5%	31037	-32.7%	24016	22109	46125
	Owner/Guardian Surrender	4538	-32.4%	3113	-39.2%	7651	-35.3%	6714	5117	11831
	Return	448	-42.0%	721	-33.7%	1169	-37.2%	773	1088	1861
	Seized / Custody	1128	-21.8%	1798	-33.8%	2926	-29.6%	1442	2716	4158
	Stray	8909	-27.1%	5301	-37.4%	14210	-31.3%	12219	8468	20687
	Transfer In	2206	-23.1%	2875	-39.1%	5081	-33.0%	2868	4720	7588
								Same Week 2019		
	Outcome Operation	Cat		Dog		Total		Same Week 2019		
		Total	YoY	Total	YoY	Total	YoY	Cat	Dog	Total
Outcomes	Total	16016	-27.2%	13466	-37.2%	29482	-32.1%	21997	21441	43438
	Adoption	10387	-22.4%	7133	-37.0%	17520	-29.1%	13384	11324	24708
	Died	601	-33.9%	82	-51.8%	683	-36.7%	909	170	1079
	Euthanasia	2083	-47.3%	1097	-53.3%	3180	-49.5%	3950	2348	6298
	Return to Owner/Guardian	700	-22.4%	2710	-30.3%	3410	-28.8%	902	3890	4792
	Transfer Out	2245	-21.3%	2444	-34.1%	4689	-28.5%	2852	3709	6561
								Same Week 2019		
	Week Starting	Cat		Dog		Total		Same Week 2019		
		Total	YoY	Total	YoY	Total	YoY	Cat	Dog	Total
Foster Starts	9/5/2020	5751	-14.2%	2435	-21.9%	8186	-16.6%	6702	3119	9821
								Same Week 2019		
	Week Starting	Cat		Dog		Total		Same Week 2019		
		Total	YoY	Total	YoY	Total	YoY	Cat	Dog	Total
Total Inventory	9/5/2020	110009	-9.8%	60673	-16.8%	170682	-12.4%	121919	72958	194877
								Same Week 2019		
	Week Starting	Cat		Dog		Total		Same Week 2019		
		Total	YoY	Total	YoY	Total	YoY	Cat	Dog	Total
In Foster	9/5/2020	39796	6.9%	16568	12.4%	56364	8.5%	37214	14741	51955
								Same Week 2019		
	Week Starting	Cat		Dog		Total		Same Week 2019		
		Total	YoY	Total	YoY	Total	YoY	Cat	Dog	Total
In Shelter	9/5/2020	70213	-17.1%	44105	-24.2%	114318	-20.0%	84705	58217	142922

For more information please contact: Steve Zeidman
 Senior Vice President, Software Solutions
 Pethealth Inc.
steve.zeidman@Pethealthinc.com

REGIONAL:

U.S. Census Divisions



Pacific (AK, CA, HI, OR, WA):

	Cat		Dog		Total		Same Week 2019		
	Total	YoY	Total	YoY	Total	YoY	Cat	Dog	Total
Intakes									
Intake Operation	Cat		Dog		Total		Cat	Dog	Total
Total	1893	-32.3%	1396	-35.7%	3289	-33.8%	2797	2171	4968
Owner/Guardian Surrender	402	-29.8%	275	-48.2%	677	-38.7%	573	531	1104
Return	62	-10.1%	50	-46.2%	112	-30.9%	69	93	162
Seized / Custody	69	-54.9%	137	-48.3%	206	-50.7%	153	265	418
Stray	1069	-23.9%	660	-21.7%	1729	-23.1%	1404	843	2247
Transfer In	291	-51.3%	274	-37.6%	565	-45.5%	598	439	1037
Outcomes									
Outcome Operation	Cat		Dog		Total		Cat	Dog	Total
Total	1919	-26.5%	1243	-39.7%	3162	-32.3%	2612	2061	4673
Adoption	1289	-15.3%	568	-41.9%	1857	-25.7%	1522	977	2499
Died	36	-58.6%	8	100.0%	44	-51.6%	87	4	91
Euthanasia	205	-60.1%	118	-55.6%	323	-58.6%	514	266	780
Return to Owner/Guardian	80	11.1%	300	-31.8%	380	-25.8%	72	440	512
Transfer Out	309	-25.9%	249	-33.4%	558	-29.5%	417	374	791
Foster Starts									
Week Starting	Cat		Dog		Total		Cat	Dog	Total
9/5/2020	850	8.7%	239	-20.3%	1089	0.6%	782	300	1082
Total Inventory									
Week Starting	Cat		Dog		Total		Cat	Dog	Total
9/5/2020	11226	-11.7%	4226	-27.1%	15452	-16.5%	12712	5799	18511
In Foster									
Week Starting	Cat		Dog		Total		Cat	Dog	Total
9/5/2020	4882	10.2%	1213	-4.5%	6095	6.9%	4429	1270	5699
In Shelter									
Week Starting	Cat		Dog		Total		Cat	Dog	Total
9/5/2020	6344	-23.4%	3013	-33.5%	9357	-27.0%	8283	4529	12812

Mountain (AZ, CO, ID, MT, NM, NV, UT, WY):

	Intake Operation	Cat		Dog		Total		Same Week 2019		
		Total	YoY	Total	YoY	Total	YoY	Cat	Dog	Total
Intakes										
▲										
Total		1467	-43.4%	1478	-37.2%	2945	-40.5%	2592	2354	4946
Owner/Guardian Surrender		383	-50.9%	350	-41.6%	733	-46.8%	780	599	1379
Return		39	-47.3%	84	-30.0%	123	-36.6%	74	120	194
Seized / Custody		122	-49.6%	217	-5.2%	339	-28.0%	242	229	471
Stray		729	-37.8%	531	-39.2%	1260	-38.4%	1172	874	2046
Transfer In		194	-40.1%	296	-44.4%	490	-42.8%	324	532	856
										Same Week 2019
Outcomes										
▲										
Total		1470	-34.3%	1493	-37.4%	2963	-35.9%	2236	2384	4620
Adoption		985	-37.4%	759	-43.9%	1744	-40.4%	1574	1354	2928
Died		21	-65.6%	5	0.0%	26	-60.6%	61	5	66
Euthanasia		130	-57.9%	120	-49.8%	250	-54.4%	309	239	548
Return to Owner/Guardian		185	30.3%	487	-20.6%	672	-11.0%	142	613	755
Transfer Out		149	-0.7%	122	-29.5%	271	-16.1%	150	173	323
										Same Week 2019
Foster Starts										
▲										
Week Starting										
9/5/2020		430	-41.7%	165	-27.0%	595	-38.3%	738	226	964
										Same Week 2019
Total Inventory										
▼										
Week Starting										
9/5/2020		8655	-17.7%	5885	-6.2%	14540	-13.4%	10517	6277	16794
										Same Week 2019
In Foster										
▲										
Week Starting										
9/5/2020		3044	-10.9	1398	18.4%	4442	-3.4%	3417	1181	4598
										Same Week 2019
In Shelter										
▲										
Week Starting										
9/5/2020		5611	-21.0%	4487	-12.0%	10098	-17.2%	7100	5096	12196

West North Central (IA, KS, MN, MO, ND, NE, SD):

	Intake Operation	Cat		Dog		Total		Same Week 2019		
		Total	YoY	Total	YoY	Total	YoY	Cat	Dog	Total
Intakes										
▲										
Total		1368	-27.9%	896	-39.1%	2264	-32.8%	1897	1472	3369
Owner/Guardian Surrender		501	-19.1%	221	-46.1%	722	-29.8%	619	410	1029
Return		55	-35.3%	59	-33.0%	114	-34.1%	85	88	173
Seized / Custody		31	-69.0%	112	-29.1%	143	-44.6%	100	158	258
Stray		579	-32.9%	305	-31.2%	884	-32.3%	863	443	1306
Transfer In		202	-12.2%	199	-46.6%	401	-33.5%	230	373	603
										Same Week 2019
Outcomes										
▲										
Total		1267	-33.9%	838	-38.4%	2105	-35.8%	1918	1361	3279
Adoption		889	-26.3%	494	-42.7%	1383	-33.2%	1207	862	2069
Died		51	-30.1%	4	-73.3%	55	-37.5%	73	15	88
Euthanasia		154	-59.6%	71	-39.8%	225	-54.9%	381	118	499
Return to Owner/Guardian		52	-18.8%	217	-29.1%	269	-27.3%	64	306	370
Transfer Out		121	-37.3%	52	-13.3%	173	-31.6%	193	60	253
										Same Week 2019
Foster Starts										
▲										
Week Starting										
9/5/2020		382	7.9%	133	-29.6%	515	-5.2%	354	189	543
										Same Week 2019
Total Inventory										
▼										
Week Starting										
9/5/2020		9054	-1.9%	3838	-14.6%	12892	-6.0%	9227	4495	13722
										Same Week 2019
In Foster										
▲										
Week Starting										
9/5/2020		3393	19.5%	1552	21.7%	4945	20.2%	2840	1275	4115
										Same Week 2019
In Shelter										
▲										
Week Starting										
9/5/2020		5661	-11.4%	2286	-29.0%	7947	-17.3%	6387	3220	9607

West South Central (AR, LA, OK, TX):

Intakes	Intake Operation	Cat		Dog		Total		Same Week 2019			
		Total	YoY	Total	YoY	Total	YoY	Cat	Dog	Total	
Total		2316	-34.7%	3052	-39.1%	5368	-37.3%	3544	5015	8559	
Owner/Guardian Surrender		422	-42.3%	676	-35.5%	1098	-38.3%	732	1048	1780	
Return		50	-32.4%	129	-34.2%	179	-33.7%	74	196	270	
Seized / Custody		168	-30.3%	447	-37.8%	615	-35.9%	241	719	960	
Stray		1455	-34.3%	1505	-40.4%	2960	-37.5%	2214	2524	4738	
Transfer In		221	-21.9%	295	-44.1%	516	-36.4%	283	528	811	
Outcomes	Outcome Operation	Cat		Dog		Total		Same Week 2019			
		Total	YoY	Total	YoY	Total	YoY	Cat	Dog	Total	
		Total	1981	-35.1%	2781	-42.9%	4762	-39.9%	3054	4874	7928
		Adoption	1093	-26.4%	1140	-45.5%	2233	-37.6%	1486	2090	3576
		Died	123	-28.9%	16	-66.7%	139	-37.1%	173	48	221
		Euthanasia	258	-55.4%	206	-64.2%	464	-59.8%	579	575	1154
		Return to Owner/Guardian	114	-56.8%	617	-37.5%	731	-41.6%	264	987	1251
Transfer Out	393	-28.8%	802	-31.7%	1195	-30.8%	552	1174	1726		
Foster Starts	Week Starting	Cat		Dog		Total		Same Week 2019			
		Total	YoY	Total	YoY	Total	YoY	Cat	Dog	Total	
	9/5/2020	735	-22.1%	431	-37.2%	1166	-28.5%	944	686	1630	
Total Inventory	Week Starting	Cat		Dog		Total		Same Week 2019			
		Total	YoY	Total	YoY	Total	YoY	Cat	Dog	Total	
	9/5/2020	12953	-23.0%	12416	-22.4%	25369	-22.7%	16833	16001	32834	
In Foster	Week Starting	Cat		Dog		Total		Same Week 2019			
		Total	YoY	Total	YoY	Total	YoY	Cat	Dog	Total	
	9/5/2020	5809	-6.4%	3562	-8.2%	9371	-7.1%	6206	3881	10087	
In Shelter	Week Starting	Cat		Dog		Total		Same Week 2019			
		Total	YoY	Total	YoY	Total	YoY	Cat	Dog	Total	
	9/5/2020	7144	-32.8%	8854	-26.9%	15998	-29.7%	10627	12120	22747	

East North Central (IL, IN, MI, OH, WI):

Intakes	Intake Operation	Cat		Dog		Total		Same Week 2019			
		Total	YoY	Total	YoY	Total	YoY	Cat	Dog	Total	
Total		2892	-22.9%	2124	-31.7%	5016	-26.9%	3750	3112	6862	
Owner/Guardian Surrender		842	-17.6%	484	-32.4%	1326	-23.7%	1022	716	1738	
Return		81	-52.1%	158	-13.2%	239	-31.9%	169	182	351	
Seized / Custody		90	-41.6%	183	-41.2%	273	-41.3%	154	311	465	
Stray		1604	-21.7%	602	-40.8%	2206	-28.0%	2049	1017	3066	
Transfer In		275	-22.8%	697	-21.3%	972	-21.7%	356	886	1242	
Outcomes	Outcome Operation	Cat		Dog		Total		Same Week 2019			
		Total	YoY	Total	YoY	Total	YoY	Cat	Dog	Total	
		Total	2834	-21.8%	2216	-28.7%	5050	-25.0%	3624	3109	6733
		Adoption	2127	-16.7%	1494	-21.1%	3621	-18.6%	2552	1894	4446
		Died	99	-46.8%	17	-46.9%	116	-46.8%	186	32	218
		Euthanasia	284	-36.3%	164	-52.2%	448	-43.2%	446	343	789
		Return to Owner/Guardian	137	-11.6%	362	-30.5%	499	-26.2%	155	521	676
Transfer Out	187	-34.4%	179	-43.9%	366	-39.4%	285	319	604		
Foster Starts	Week Starting	Cat		Dog		Total		Same Week 2019			
		Total	YoY	Total	YoY	Total	YoY	Cat	Dog	Total	
	9/5/2020	928	-26.1%	502	0.0%	1430	-18.7%	1256	502	1758	
Total Inventory	Week Starting	Cat		Dog		Total		Same Week 2019			
		Total	YoY	Total	YoY	Total	YoY	Cat	Dog	Total	
	9/5/2020	21236	-9.2%	10239	-8.5%	31475	-8.9%	23375	11185	34560	
In Foster	Week Starting	Cat		Dog		Total		Same Week 2019			
		Total	YoY	Total	YoY	Total	YoY	Cat	Dog	Total	
	9/5/2020	6370	9.0%	3415	55.4%	9785	21.7%	5846	2197	8043	
In Shelter	Week Starting	Cat		Dog		Total		Same Week 2019			
		Total	YoY	Total	YoY	Total	YoY	Cat	Dog	Total	
	9/5/2020	14866	-15.2%	6824	-24.1%	21690	-18.2%	17529	8988	26517	

East South Central (AL, KY, MS, TN):

Intakes	Intake Operation	Cat		Dog		Total		Same Week 2019		
		Total	YoY	Total	YoY	Total	YoY	Cat	Dog	Total
Total		978	-22.4%	920	-38.8%	1898	-31.4%	1261	1504	2765
Owner/Guardian Surrender		377	-33.6%	271	-36.8%	648	-35.0%	568	429	997
Return		22	-12.0%	46	-22.0%	68	-19.0%	25	59	84
Seized / Custody		6	-89.8%	103	25.6%	109	-22.7%	59	82	141
Stray		501	3.5%	335	-50.5%	836	-28.0%	484	677	1161
Transfer In		72	-42.4%	165	-35.8%	237	-38.0%	125	257	382

Outcomes	Outcome Operation	Cat		Dog		Total		Same Week 2019		
		Total	YoY	Total	YoY	Total	YoY	Cat	Dog	Total
Total		928	-17.6%	916	-35.5%	1844	-27.6%	1126	1421	2547
Adoption		502	-12.8%	388	-32.0%	890	-22.4%	576	571	1147
Died		32	-25.6%	4	-71.4%	36	-36.8%	43	14	57
Euthanasia		274	-23.2%	93	-55.5%	367	-35.2%	357	209	566
Return to Owner/Guardian		11	-69.4%	126	-19.2%	137	-28.6%	36	156	192
Transfer Out		109	-4.4%	305	-35.2%	414	-29.2%	114	471	585

Foster Starts	Week Starting	Cat		Dog		Total		Same Week 2019		
		Total	YoY	Total	YoY	Total	YoY	Cat	Dog	Total
	9/5/2020	289	68.0%	160	-35.2%	449	7.2%	172	247	419

Total Inventory	Week Starting	Cat		Dog		Total		Same Week 2019		
		Total	YoY	Total	YoY	Total	YoY	Cat	Dog	Total
	9/5/2020	6521	12.2%	5403	-11.3%	11924	0.2%	5811	6090	11901

In Foster	Week Starting	Cat		Dog		Total		Same Week 2019		
		Total	YoY	Total	YoY	Total	YoY	Cat	Dog	Total
	9/5/2020	1659	15.4%	1114	0.4%	2773	8.8%	1438	1110	2548

In Shelter	Week Starting	Cat		Dog		Total		Same Week 2019		
		Total	YoY	Total	YoY	Total	YoY	Cat	Dog	Total
	9/5/2020	4862	11.2%	4289	-13.9%	9151	-2.2%	4373	4980	9353

New England (CT, MA, ME, NH, RI, VT):

Intakes	Intake Operation	Cat		Dog		Total		Same Week 2019		
		Total	YoY	Total	YoY	Total	YoY	Cat	Dog	Total
Total		573	-38.1%	334	-46.1%	907	-41.3%	925	620	1545
Owner/Guardian Surrender		190	-46.9%	84	-27.6%	274	-42.2%	358	116	474
Return		18	-45.5%	11	-68.6%	29	-57.4%	33	35	68
Seized / Custody		5	-68.8%	12	71.4%	17	-26.1%	16	7	23
Stray		230	-36.8%	104	-24.6%	334	-33.5%	364	138	502
Transfer In		130	-15.6%	123	-62.0%	253	-47.1%	154	324	478

Outcomes	Outcome Operation	Cat		Dog		Total		Same Week 2019		
		Total	YoY	Total	YoY	Total	YoY	Cat	Dog	Total
Total		569	-27.7%	295	-55.4%	864	-40.3%	787	661	1448
Adoption		493	-26.3%	202	-62.9%	695	-42.7%	669	544	1213
Died		12	33.3%			12	33.3%	9		9
Euthanasia		26	-58.1%	31	3.3%	57	-38.0%	62	30	92
Return to Owner/Guardian		24	-27.3%	52	-23.5%	76	-24.8%	33	68	101
Transfer Out		14	0.0%	10	-47.4%	24	-27.3%	14	19	33

Foster Starts	Week Starting	Cat		Dog		Total		Same Week 2019		
		Total	YoY	Total	YoY	Total	YoY	Cat	Dog	Total
	9/5/2020	177	-30.6%	85	-1.2%	262	-23.2%	255	86	341

Total Inventory	Week Starting	Cat		Dog		Total		Same Week 2019		
		Total	YoY	Total	YoY	Total	YoY	Cat	Dog	Total
	9/5/2020	3489	-21.6%	1262	-34.7%	4751	-25.6%	4452	1932	6384

In Foster	Week Starting	Cat		Dog		Total		Same Week 2019		
		Total	YoY	Total	YoY	Total	YoY	Cat	Dog	Total
	9/5/2020	1283	-7.2%	333	-31.3	1616	-13.5%	1383	485	1868

In Shelter	Week Starting	Cat		Dog		Total		Same Week 2019		
		Total	YoY	Total	YoY	Total	YoY	Cat	Dog	Total
	9/5/2020	2206	-28.1%	929	-35.8%	3135	-30.6%	3069	1447	4516

Middle Atlantic (NJ, NY, PA):

	Cat		Dog		Total		Same Week 2019		
	Total	YoY	Total	YoY	Total	YoY	Cat	Dog	Total
Intakes									
Intake Operation	Total	YoY	Total	YoY	Total	YoY	Cat	Dog	Total
Total	1622	-17.0%	851	-33.0%	2473	-23.3%	1954	1271	3225
Owner/Guardian Surrender	355	-33.8%	171	-33.2%	526	-33.6%	536	256	792
Return	42	-51.7%	53	-43.0%	95	-47.2%	87	93	180
Seized / Custody	300	341.2%	52	-66.2%	352	58.6%	68	154	222
Stray	823	-26.8%	271	-29.8%	1094	-27.5%	1124	386	1510
Transfer In	102	-26.6%	304	-20.4%	406	-22.1%	139	382	521
Outcomes									
Outcome Operation	Total	YoY	Total	YoY	Total	YoY	Cat	Dog	Total
Total	1205	-35.2%	827	-29.9%	2032	-33.2%	1860	1180	3040
Adoption	809	-32.8%	620	-17.3%	1429	-26.9%	1204	750	1954
Died	73	-21.5%	6	0.0%	79	-20.2%	93	6	99
Euthanasia	149	-55.5%	48	-60.7%	197	-56.9%	335	122	457
Return to Owner/Guardian	20	-62.3%	130	-30.5%	150	-37.5%	53	187	240
Transfer Out	154	-12.0%	23	-80.0%	177	-39.0%	175	115	290
Foster Starts									
Week Starting	Total	YoY	Total	YoY	Total	YoY	Cat	Dog	Total
9/5/2020	559	-19.2%	207	21.1%	766	-11.2%	692	171	863
Total Inventory									
Week Starting	Total	YoY	Total	YoY	Total	YoY	Cat	Dog	Total
9/5/2020	11735	-6.4%	4105	-15.2%	15840	-8.8%	12539	4838	17377
In Foster									
Week Starting	Total	YoY	Total	YoY	Total	YoY	Cat	Dog	Total
9/5/2020	4318	11.8%	1115	28.8%	5433	14.9%	3861	866	4727
In Shelter									
Week Starting	Total	YoY	Total	YoY	Total	YoY	Cat	Dog	Total
9/5/2020	7417	-14.5%	2990	-24.7%	10407	-17.7%	8678	3972	12650

South Atlantic (DE, FL, GA, MD, NC, SC, VA, WV):

	Cat		Dog		Total		Same Week 2019		
	Total	YoY	Total	YoY	Total	YoY	Cat	Dog	Total
Intakes									
Intake Operation	Total	YoY	Total	YoY	Total	YoY	Cat	Dog	Total
Total	4120	-22.2%	2757	-39.9%	6877	-30.4%	5296	4590	9886
Owner/Guardian Surrender	1066	-30.1%	581	-42.6%	1647	-35.1%	1526	1012	2538
Return	79	-49.7%	131	-41.0%	210	-44.6%	157	222	379
Seized / Custody	337	-17.6%	535	-32.4%	872	-27.3%	409	791	1200
Stray	1919	-24.6%	988	-36.9%	2907	-29.3%	2545	1566	4111
Transfer In	719	9.1%	522	-47.7%	1241	-25.2%	659	999	1658
Outcomes									
Outcome Operation	Total	YoY	Total	YoY	Total	YoY	Cat	Dog	Total
Total	3843	-19.6%	2857	-34.9%	6700	-26.9%	4780	4390	9170
Adoption	2200	-15.2%	1468	-35.7%	3668	-24.8%	2594	2282	4876
Died	154	-16.3%	22	-52.2%	176	-23.5%	184	46	230
Euthanasia	603	-37.6%	246	-44.8%	849	-39.9%	967	446	1413
Return to Owner/Guardian	77	-7.2%	419	-31.5%	496	-28.6%	83	612	695
Transfer Out	809	-15.0%	702	-30.1%	1511	-22.8%	952	1004	1956
Foster Starts									
Week Starting	Total	YoY	Total	YoY	Total	YoY	Cat	Dog	Total
9/5/2020	1401	-7.2%	513	-27.9%	1914	-13.8%	1509	712	2221
Total Inventory									
Week Starting	Total	YoY	Total	YoY	Total	YoY	Cat	Dog	Total
9/5/2020	25140	-5.0%	13299	-18.6%	38439	-10.2%	26453	16341	42794
In Foster									
Week Starting	Total	YoY	Total	YoY	Total	YoY	Cat	Dog	Total
9/5/2020	9038	16.0%	2866	15.8%	11904	15.9%	7794	2476	10270
In Shelter									
Week Starting	Total	YoY	Total	YoY	Total	YoY	Cat	Dog	Total
9/5/2020	16102	-13.7%	10433	-24.8%	26535	-18.4%	18659	13865	32524