

**Week 22: August 8, 2020**

The 24Pet® ShelterWatch Report: COVID-19 Impact report is a weekly gauge of U.S. homeless pet populations in the care of animal welfare organizations.

The COVID-19 Impact Report aggregates data from 1200 animal welfare organizations (“AWOs”) in the United States. It compares the weekly data to data from the same week in 2019.

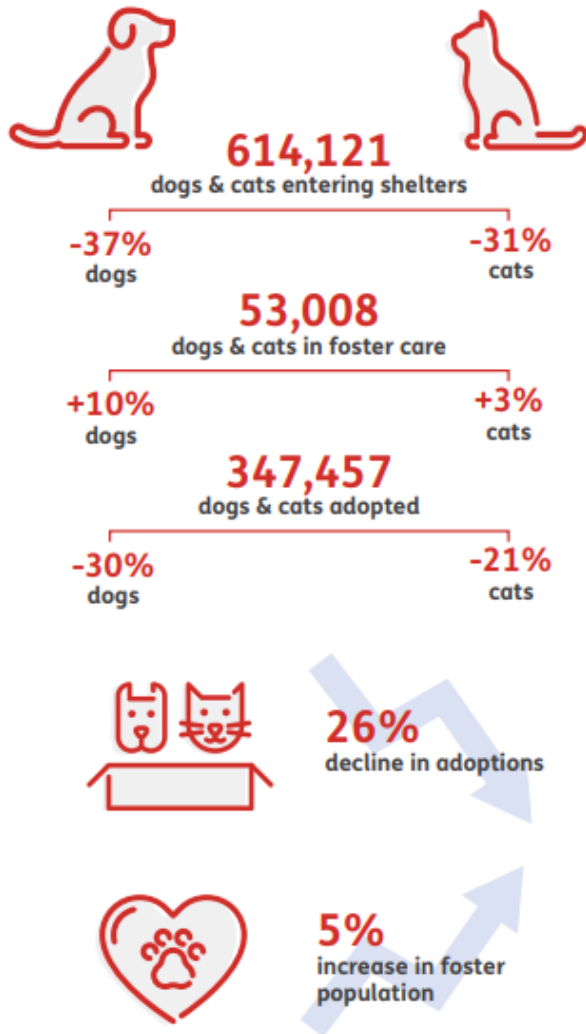
For the purposes here, AWOs are defined as animal control agencies, SPCAs, humane societies and rescue groups. Only data from AWOs operating PetPoint during both January 1, 2019 to current have been included. For commentary see: <https://pethealth.force.com/community/s/blog>

## As the world navigates through a new reality, our pet population remains vulnerable and in-need.

Despite temporary closings and reduced shelter capacity, at least 614,121 new animals have arrived in the 1,191 shelters monitored by the 24Pet® ShelterWatch Report since the start of the pandemic. This number is expected to surge in the coming months with an anticipated increase in relinquished and abandoned animals.

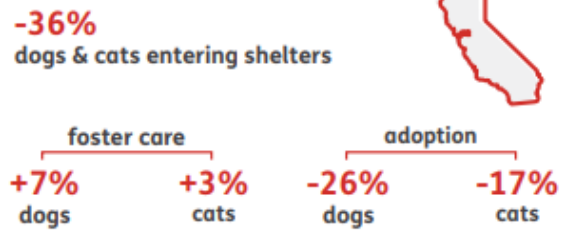
March 13 - August 14, 2020 compared to the same period in 2019

### US NATIONAL STATS



### STATS BY STATE

#### CALIFORNIA



#### TEXAS



#### FLORIDA



Pethealth Services (USA) Inc. ("24PetWatch®") strives to provide accurate and up-to-date material on this 24Pet® ShelterWatch Report (the "Report"). 24PetWatch® assumes no responsibility or does not guarantee as to the accuracy or timeliness of the material provided in this Report. Neither 24PetWatch®, its employees, officers, directors, agents, parent companies or subsidiary companies assume any liability or responsibility for any errors or omissions on any information provided within this Report.

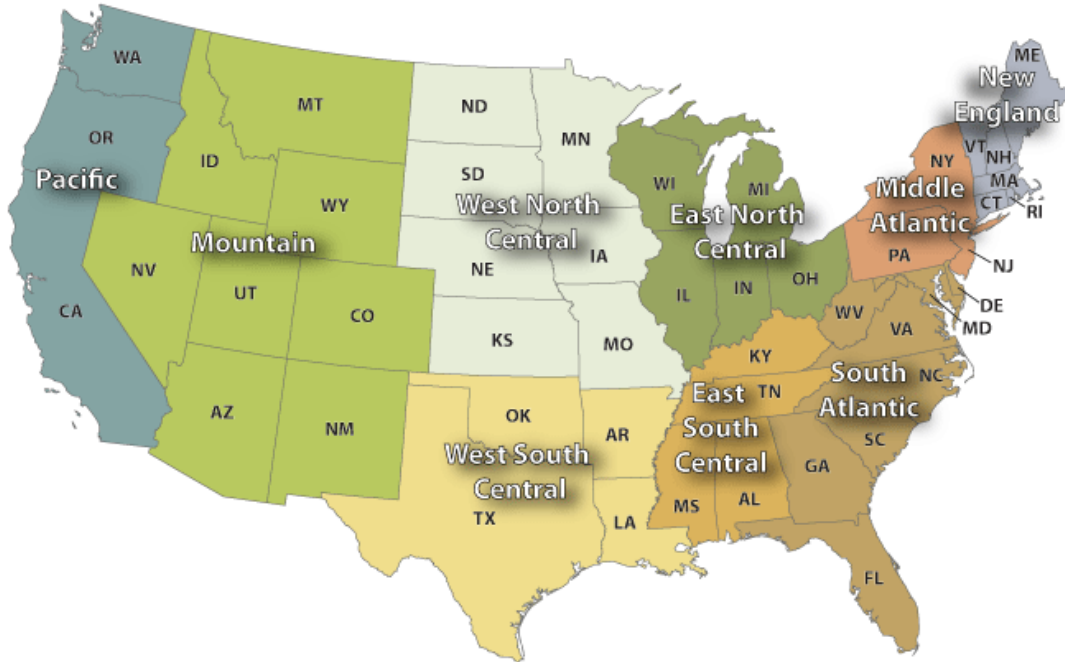
**NATIONAL:**

	Cat		Dog		Total		Same Week 2019		
	Total	YoY	Total	YoY	Total	YoY	Cat	Dog	Total
<b>Intakes</b>									
Intake Operation									
<b>Total</b>	<b>18453</b>	<b>-16.6%</b>	<b>14559</b>	<b>-27.5%</b>	<b>33012</b>	<b>-21.8%</b>	<b>22115</b>	<b>20082</b>	<b>42197</b>
Owner/Guardian Surrender	5392	-11.5%	3552	-25.2%	8944	-17.5%	6093	4751	10844
Return	498	-30.0%	809	-22.7%	1307	-25.7%	711	1047	1758
Seized / Custody	893	-38.4%	1627	-37.9%	2520	-38.1%	1450	2618	4068
Stray	9132	-17.0%	4851	-31.0%	13983	-22.4%	10996	7028	18024
Transfer In	2538	-11.4%	3720	-19.8%	6258	-16.6%	2865	4638	7503
<b>Outcomes</b>									
Outcome Operation									
<b>Total</b>	<b>17263</b>	<b>-18.9%</b>	<b>14273</b>	<b>-28.3%</b>	<b>31536</b>	<b>-23.4%</b>	<b>21282</b>	<b>19910</b>	<b>41192</b>
Adoption	11738	-12.1%	8023	-26.2%	19761	-18.5%	13355	10878	24233
Died	550	-36.2%	92	-43.2%	642	-37.3%	862	162	1024
Euthanasia	2240	-46.8%	1318	-45.0%	3558	-46.1%	4208	2397	6605
Return to Owner/Guardian	583	-24.0%	2404	-26.6%	2987	-26.1%	767	3274	4041
Transfer Out	2152	3.0%	2436	-23.9%	4588	-13.3%	2090	3199	5289
<b>Foster Starts</b>									
Week Starting									
8/8/2020	6694	3.4%	2835	-4.0%	9529	1.0%	6477	2954	9431
<b>Total Inventory</b>									
Week Starting									
8/8/2020	103793	-14.1%	56387	-21.5%	160180	-16.9%	120864	71841	192705
<b>In Foster</b>									
Week Starting									
8/8/2020	36995	3.5%	16068	10.5%	53063	5.5%	35740	14535	50275
<b>In Shelter</b>									
Week Starting									
8/8/2020	66798	-21.5%	40319	-29.6%	107117	-24.8%	85124	57306	142430

For more information please contact: Steve Zeidman  
 Senior Vice President, Software Solutions  
 Pethealth Inc.  
 steve.zeidman@Pethealthinc.com

REGIONAL:

U.S. Census Divisions



Pacific (AK, CA, HI, OR, WA):

Intakes	Intake Operation	Cat		Dog		Total		Same Week 2019		
		Total	YoY	Total	YoY	Total	YoY	Cat	Dog	Total
	<b>Total</b>	2071	-19.1%	1314	-34.6%	3385	-25.9%	2561	2008	4569
	Owner/Guardian Surrender	496	-2.9%	330	-29.0%	826	-15.4%	511	465	976
	Return	38	-45.7%	60	-21.1%	98	-32.9%	70	76	146
	Seized / Custody	63	-60.4%	134	-45.7%	197	-51.5%	159	247	406
	Stray	1143	-6.4%	573	-27.0%	1716	-14.5%	1221	785	2006
	Transfer In	331	-44.8%	217	-50.1%	548	-47.1%	600	435	1035

Outcomes	Outcome Operation	Cat		Dog		Total		Same Week 2019		
		Total	YoY	Total	YoY	Total	YoY	Cat	Dog	Total
	<b>Total</b>	1954	-20.0%	1418	-28.0%	3372	-23.6%	2442	1970	4412
	Adoption	1304	-19.3%	711	-28.2%	2015	-22.6%	1615	990	2605
	Died	47	-11.3%	9	-52.6%	56	-22.2%	53	19	72
	Euthanasia	281	-39.8%	129	-47.1%	410	-42.3%	467	244	711
	Return to Owner/Guardian	71	1.4%	287	-22.8%	358	-19.0%	70	372	442
	Transfer Out	251	5.9%	282	-18.3%	533	-8.4%	237	345	582

Foster Starts	Week Starting	Cat		Dog		Total		Same Week 2019		
		Total	YoY	Total	YoY	Total	YoY	Cat	Dog	Total
	8/8/2020	892	5.7%	239	-13.1%	1131	1.1%	844	275	1119

Total Inventory	Week Starting	Cat		Dog		Total		Same Week 2019		
		Total	YoY	Total	YoY	Total	YoY	Cat	Dog	Total
	8/8/2020	11022	-11.9%	4244	-29.9%	15266	-17.8%	12516	6053	18569

In Foster	Week Starting	Cat		Dog		Total		Same Week 2019		
		Total	YoY	Total	YoY	Total	YoY	Cat	Dog	Total
	8/8/2020	4759	8.1%	1190	-3.8%	5949	5.5%	4402	1237	5639

In Shelter	Week Starting	Cat		Dog		Total		Same Week 2019		
		Total	YoY	Total	YoY	Total	YoY	Cat	Dog	Total
	8/8/2020	6263	-22.8%	3054	-36.6%	9317	-27.9%	8114	4816	12930

## Mountain (AZ, CO, ID, MT, NM, NV, UT, WY):

Intakes	Intake Operation	Cat		Dog		Total	
		Total	YoY	Total	YoY	Total	YoY
<b>Total</b>		1627	-19.9%	1602	-22.1%	3229	-21.0%
	Owner/Guardian Surrender	497	-20.0%	425	-12.9%	922	-16.9%
	Return	43	-43.4%	85	-24.1%	128	-31.9%
	Seized / Custody	69	-41.5%	161	-41.9%	230	-41.8%
	Stray	801	-9.9%	526	-26.4%	1327	-17.3%
	Transfer In	217	-33.6%	405	-12.7%	622	-21.4%

### Same Week 2019

Cat	Dog	Total
2031	2056	4087
621	488	1109
76	112	188
118	277	395
889	715	1604
327	464	791

Outcomes	Outcome Operation	Cat		Dog		Total	
		Total	YoY	Total	YoY	Total	YoY
<b>Total</b>		1626	-21.0%	1523	-29.6%	3149	-25.4%
	Adoption	1166	-20.9%	819	-33.1%	1985	-26.5%
	Died	28	-30.0%	3	-57.1%	31	-34.0%
	Euthanasia	150	-47.4%	157	-25.9%	307	-38.2%
	Return to Owner/Guardian	124	-3.9%	392	-32.6%	516	-27.4%
	Transfer Out	158	23.4%	152	10.9%	310	17.0%

### Same Week 2019

Cat	Dog	Total
2057	2162	4219
1475	1224	2699
40	7	47
285	212	497
129	582	711
128	137	265

Foster Starts	Week Starting	Cat		Dog		Total	
		Total	YoY	Total	YoY	Total	YoY
	8/8/2020	488	-24.9%	165	-22.9%	653	-24.4%

### Same Week 2019

Cat	Dog	Total
650	214	864

Total Inventory	Week Starting	Cat		Dog		Total	
		Total	YoY	Total	YoY	Total	YoY
	8/8/2020	8088	-15.4%	5246	-11.9%	13334	-14.0%

### Same Week 2019

Cat	Dog	Total
9556	5954	15510

In Foster	Week Starting	Cat		Dog		Total	
		Total	YoY	Total	YoY	Total	YoY
	8/8/2020	2769	1.1%	1139	5.9%	3908	2.4%

### Same Week 2019

Cat	Dog	Total
2739	1076	3815

In Shelter	Week Starting	Cat		Dog		Total	
		Total	YoY	Total	YoY	Total	YoY
	8/8/2020	5319	-22.0%	4107	-15.8%	9426	-19.4%

### Same Week 2019

Cat	Dog	Total
6817	4878	11695

## West North Central (IA, KS, MN, MO, ND, NE, SD):

Intakes	Intake Operation	Cat		Dog		Total	
		Total	YoY	Total	YoY	Total	YoY
<b>Total</b>		1523	-16.6%	1012	-31.4%	2535	-23.3%
	Owner/Guardian Surrender	524	-9.0%	283	-27.2%	807	-16.4%
	Return	54	-34.9%	78	-21.2%	132	-27.5%
	Seized / Custody	55	-47.6%	131	-37.9%	186	-41.1%
	Stray	643	-25.3%	311	-28.8%	954	-26.5%
	Transfer In	247	22.3%	209	-38.5%	456	-15.9%

### Same Week 2019

Cat	Dog	Total
1827	1476	3303
576	389	965
83	99	182
105	211	316
861	437	1298
202	340	542

Outcomes	Outcome Operation	Cat		Dog		Total	
		Total	YoY	Total	YoY	Total	YoY
<b>Total</b>		1318	-23.1%	974	-32.8%	2292	-27.5%
	Adoption	893	-19.3%	571	-38.0%	1464	-27.8%
	Died	44	-45.0%	3	-70.0%	47	-47.8%
	Euthanasia	185	-48.0%	92	-25.8%	277	-42.3%
	Return to Owner/Guardian	50	-13.8%	245	-17.5%	295	-16.9%
	Transfer Out	146	28.1%	63	-35.1%	209	-0.9%

### Same Week 2019

Cat	Dog	Total
1714	1449	3163
1106	921	2027
80	10	90
356	124	480
58	297	355
114	97	211

Foster Starts	Week Starting	Cat		Dog		Total	
		Total	YoY	Total	YoY	Total	YoY
	8/8/2020	378	8.6%	162	-12.4%	540	1.3%

### Same Week 2019

Cat	Dog	Total
348	185	533

Total Inventory	Week Starting	Cat		Dog		Total	
		Total	YoY	Total	YoY	Total	YoY
	8/8/2020	8589	-4.5%	3815	-16.8%	12404	-8.6%

### Same Week 2019

Cat	Dog	Total
8993	4584	13577

In Foster	Week Starting	Cat		Dog		Total	
		Total	YoY	Total	YoY	Total	YoY
	8/8/2020	3023	8.0%	1606	23.6%	4629	12.9%

### Same Week 2019

Cat	Dog	Total
2800	1299	4099

In Shelter	Week Starting	Cat		Dog		Total	
		Total	YoY	Total	YoY	Total	YoY
	8/8/2020	5566	-10.1%	2209	-32.8%	7775	-18.0%

### Same Week 2019

Cat	Dog	Total
6193	3285	9478

## West South Central (AR, LA, OK, TX):

	Cat		Dog		Total		Same Week 2019		
	Total	YoY	Total	YoY	Total	YoY	Cat	Dog	Total
<b>Intakes</b>									
Intake Operation	Cat		Dog		Total		Same Week 2019		
	Total	YoY	Total	YoY	Total	YoY	Cat	Dog	Total
<b>Total</b>	2268	-27.4%	2729	-26.4%	4997	-26.9%	3125	3709	6834
Owner/Guardian Surrender	521	-22.7%	709	-16.2%	1230	-19.1%	674	846	1520
Return	64	-7.2%	142	-11.8%	206	-10.4%	69	161	230
Seized / Custody	164	-31.4%	385	-32.6%	549	-32.2%	239	571	810
Stray	1224	-34.8%	1000	-37.1%	2224	-35.8%	1877	1589	3466
Transfer In	295	10.9%	493	-9.0%	788	-2.5%	266	542	808
<b>Outcomes</b>									
Outcome Operation	Cat		Dog		Total		Same Week 2019		
	Total	YoY	Total	YoY	Total	YoY	Cat	Dog	Total
<b>Total</b>	2124	-23.6%	2792	-27.8%	4916	-26.0%	2780	3865	6645
Adoption	1267	-6.4%	1426	-17.6%	2693	-12.7%	1353	1730	3083
Died	84	-51.7%	25	-49.0%	109	-51.1%	174	49	223
Euthanasia	265	-59.5%	280	-48.5%	545	-54.5%	655	544	1199
Return to Owner/Guardian	95	-49.2%	364	-30.3%	459	-35.3%	187	522	709
Transfer Out	413	0.5%	697	-31.7%	1110	-22.4%	411	1020	1431
<b>Foster Starts</b>									
Week Starting	Cat		Dog		Total		Same Week 2019		
	Total	YoY	Total	YoY	Total	YoY	Cat	Dog	Total
8/8/2020	773	-4.7%	591	-17.5%	1364	-10.7%	811	716	1527
<b>Total Inventory</b>									
Week Starting	Cat		Dog		Total		Same Week 2019		
	Total	YoY	Total	YoY	Total	YoY	Cat	Dog	Total
8/8/2020	11457	-29.2%	10312	-28.8%	21769	-29.0%	16176	14481	30657
<b>In Foster</b>									
Week Starting	Cat		Dog		Total		Same Week 2019		
	Total	YoY	Total	YoY	Total	YoY	Cat	Dog	Total
8/8/2020	5617	-4.7%	3639	-5.5%	9256	-5.0%	5896	3850	9746
<b>In Shelter</b>									
Week Starting	Cat		Dog		Total		Same Week 2019		
	Total	YoY	Total	YoY	Total	YoY	Cat	Dog	Total
8/8/2020	5840	-43.2%	6673	-37.2%	12513	-40.2%	10280	10631	20911

## East North Central (IL, IN, MI, OH, WI):

	Cat		Dog		Total		Same Week 2019		
	Total	YoY	Total	YoY	Total	YoY	Cat	Dog	Total
<b>Intakes</b>									
Intake Operation	Cat		Dog		Total		Same Week 2019		
	Total	YoY	Total	YoY	Total	YoY	Cat	Dog	Total
<b>Total</b>	3193	-9.7%	2233	-23.0%	5426	-15.7%	3535	2899	6434
Owner/Guardian Surrender	1021	0.7%	462	-20.9%	1483	-7.2%	1014	584	1598
Return	98	-21.0%	156	-21.6%	254	-21.4%	124	199	323
Seized / Custody	97	-46.4%	146	-60.3%	243	-55.7%	181	368	549
Stray	1530	-19.5%	560	-30.3%	2090	-22.7%	1900	804	2704
Transfer In	447	41.5%	909	-3.7%	1356	7.6%	316	944	1260
<b>Outcomes</b>									
Outcome Operation	Cat		Dog		Total		Same Week 2019		
	Total	YoY	Total	YoY	Total	YoY	Cat	Dog	Total
<b>Total</b>	3088	-9.2%	2221	-24.6%	5309	-16.4%	3402	2945	6347
Adoption	2325	-6.0%	1525	-18.1%	3850	-11.2%	2473	1861	4334
Died	97	-33.6%	19	35.7%	116	-27.5%	146	14	160
Euthanasia	307	-31.8%	178	-39.2%	485	-34.7%	450	293	743
Return to Owner/Guardian	112	-25.8%	328	-37.0%	440	-34.5%	151	521	672
Transfer Out	247	35.7%	171	-33.2%	418	-4.6%	182	256	438
<b>Foster Starts</b>									
Week Starting	Cat		Dog		Total		Same Week 2019		
	Total	YoY	Total	YoY	Total	YoY	Cat	Dog	Total
8/8/2020	1122	2.4%	671	47.8%	1793	15.7%	1096	454	1550
<b>Total Inventory</b>									
Week Starting	Cat		Dog		Total		Same Week 2019		
	Total	YoY	Total	YoY	Total	YoY	Cat	Dog	Total
8/8/2020	19764	-11.5%	9473	-11.7%	29237	-11.6%	22343	10728	33071
<b>In Foster</b>									
Week Starting	Cat		Dog		Total		Same Week 2019		
	Total	YoY	Total	YoY	Total	YoY	Cat	Dog	Total
8/8/2020	5636	5.1%	3010	36.6%	8646	14.2%	5364	2204	7568
<b>In Shelter</b>									
Week Starting	Cat		Dog		Total		Same Week 2019		
	Total	YoY	Total	YoY	Total	YoY	Cat	Dog	Total
8/8/2020	14128	-16.8%	6463	-24.2%	20591	-19.3%	16979	8524	25503

## East South Central (AL, KY, MS, TN):

Intakes	Intake Operation	Cat		Dog		Total	
		Total	YoY	Total	YoY	Total	YoY
<b>Total</b>		1179	-10.9%	975	-30.4%	2154	-20.9%
	Owner/Guardian Surrender	473	-16.6%	342	-31.7%	815	-23.7%
	Return	28	-37.8%	55	0.0%	83	-17.0%
	Seized / Custody	22	-65.6%	61	-14.1%	83	-38.5%
	Stray	545	11.0%	352	-33.6%	897	-12.1%
	Transfer In	111	-28.8%	165	-32.1%	276	-30.8%

### Same Week 2019

Cat	Dog	Total
1323	1400	2723
567	501	1068
45	55	100
64	71	135
491	530	1021
156	243	399

Outcomes	Outcome Operation	Cat		Dog		Total	
		Total	YoY	Total	YoY	Total	YoY
<b>Total</b>		964	-16.3%	979	-18.5%	1943	-17.4%
	Adoption	539	-20.4%	412	-16.1%	951	-18.6%
	Died	23	-53.1%	3	-83.3%	26	-61.2%
	Euthanasia	294	-19.0%	112	-53.5%	406	-32.8%
	Return to Owner/Guardian	7	-69.6%	103	-13.4%	110	-22.5%
	Transfer Out	101	152.5%	349	5.1%	450	21.0%

### Same Week 2019

Cat	Dog	Total
1152	1201	2353
677	491	1168
49	18	67
363	241	604
23	119	142
40	332	372

Foster Starts	Week Starting	Cat		Dog		Total	
		Total	YoY	Total	YoY	Total	YoY
	8/8/2020	338	62.5%	160	-24.5%	498	18.6%

### Same Week 2019

Cat	Dog	Total
208	212	420

Total Inventory	Week Starting	Cat		Dog		Total	
		Total	YoY	Total	YoY	Total	YoY
	8/8/2020	6073	9.6%	5208	-13.6%	11281	-2.5%

### Same Week 2019

Cat	Dog	Total
5540	6026	11566

In Foster	Week Starting	Cat		Dog		Total	
		Total	YoY	Total	YoY	Total	YoY
	8/8/2020	1501	18.1%	1001	-4.8%	2502	7.8%

### Same Week 2019

Cat	Dog	Total
1271	1051	2322

In Shelter	Week Starting	Cat		Dog		Total	
		Total	YoY	Total	YoY	Total	YoY
	8/8/2020	4572	7.1%	4207	-15.4%	8779	-5.0%

### Same Week 2019

Cat	Dog	Total
4269	4975	9244

## New England (CT, MA, ME, NH, RI, VT):

Intakes	Intake Operation	Cat		Dog		Total	
		Total	YoY	Total	YoY	Total	YoY
<b>Total</b>		714	-13.5%	352	-40.2%	1066	-24.6%
	Owner/Guardian Surrender	229	-26.1%	61	-30.7%	290	-27.1%
	Return	17	-32.0%	16	-57.9%	33	-47.6%
	Seized / Custody	5	-44.4%	8	-83.3%	13	-77.2%
	Stray	227	-8.8%	116	7.4%	343	-3.9%
	Transfer In	236	1.7%	151	-50.8%	387	-28.2%

### Same Week 2019

Cat	Dog	Total
825	589	1414
310	88	398
25	38	63
9	48	57
249	108	357
232	307	539

Outcomes	Outcome Operation	Cat		Dog		Total	
		Total	YoY	Total	YoY	Total	YoY
<b>Total</b>		612	-21.4%	367	-37.7%	979	-28.4%
	Adoption	528	-18.8%	293	-40.0%	821	-27.9%
	Died	21	5.0%	1		22	10.0%
	Euthanasia	35	-37.5%	24	0.0%	59	-26.3%
	Return to Owner/Guardian	15	-50.0%	43	-35.8%	58	-40.2%
	Transfer Out	13	-43.5%	6	-40.0%	19	-42.4%

### Same Week 2019

Cat	Dog	Total
779	589	1368
650	488	1138
20		20
56	24	80
30	67	97
23	10	33

Foster Starts	Week Starting	Cat		Dog		Total	
		Total	YoY	Total	YoY	Total	YoY
	8/8/2020	259	3.6%	47	-64.1%	306	-19.7%

### Same Week 2019

Cat	Dog	Total
250	131	381

Total Inventory	Week Starting	Cat		Dog		Total	
		Total	YoY	Total	YoY	Total	YoY
	8/8/2020	2832	-32.4%	1218	-34.4%	4050	-33.0%

### Same Week 2019

Cat	Dog	Total
4187	1857	6044

In Foster	Week Starting	Cat		Dog		Total	
		Total	YoY	Total	YoY	Total	YoY
	8/8/2020	950	-20.6%	343	-32.1%	1293	-24.0%

### Same Week 2019

Cat	Dog	Total
1196	505	1701

In Shelter	Week Starting	Cat		Dog		Total	
		Total	YoY	Total	YoY	Total	YoY
	8/8/2020	1882	-37.1%	875	-35.3%	2757	-36.5%

### Same Week 2019

Cat	Dog	Total
2991	1352	4343

## Middle Atlantic (NJ, NY, PA):

	Cat		Dog		Total		Same Week 2019		
	Total	YoY	Total	YoY	Total	YoY	Cat	Dog	Total
<b>Intakes</b>									
Intake Operation	Total	YoY	Total	YoY	Total	YoY	Cat	Dog	Total
<b>Total</b>	1591	-25.1%	1196	-14.0%	2787	-20.7%	2125	1391	3516
Owner/Guardian Surrender	393	-15.7%	205	-44.4%	598	-28.4%	466	369	835
Return	51	-49.0%	70	-14.6%	121	-33.5%	100	82	182
Seized / Custody	66	-35.9%	68	-33.3%	134	-34.6%	103	102	205
Stray	929	-23.5%	274	-39.8%	1203	-27.9%	1214	455	1669
Transfer In	152	-37.2%	579	51.2%	731	17.0%	242	383	625
<b>Outcomes</b>									
Outcome Operation	Total	YoY	Total	YoY	Total	YoY	Cat	Dog	Total
<b>Total</b>	1661	-20.3%	955	-31.7%	2616	-24.9%	2084	1399	3483
Adoption	1205	-11.8%	718	-20.9%	1923	-15.4%	1366	908	2274
Died	86	-25.2%	8	-38.5%	94	-26.6%	115	13	128
Euthanasia	197	-32.5%	77	-44.2%	274	-36.3%	292	138	430
Return to Owner/Guardian	17	-57.5%	134	-39.6%	151	-42.4%	40	222	262
Transfer Out	156	-42.4%	18	-84.7%	174	-55.3%	271	118	389
<b>Foster Starts</b>									
Week Starting	Total	YoY	Total	YoY	Total	YoY	Cat	Dog	Total
8/8/2020	706	-9.5%	203	4.6%	909	-6.7%	780	194	974
<b>Total Inventory</b>									
Week Starting	Total	YoY	Total	YoY	Total	YoY	Cat	Dog	Total
8/8/2020	11620	-16.5%	4038	-25.9%	15658	-19.2%	13922	5453	19375
<b>In Foster</b>									
Week Starting	Total	YoY	Total	YoY	Total	YoY	Cat	Dog	Total
8/8/2020	4305	-3.7%	1210	19.0%	5515	0.5%	4471	1017	5488
<b>In Shelter</b>									
Week Starting	Total	YoY	Total	YoY	Total	YoY	Cat	Dog	Total
8/8/2020	7315	-22.6%	2828	-36.2%	10143	-27.0%	9451	4436	13887

## South Atlantic (DE, FL, GA, MD, NC, SC, VA, WV):

	Cat		Dog		Total		Same Week 2019		
	Total	YoY	Total	YoY	Total	YoY	Cat	Dog	Total
<b>Intakes</b>									
Intake Operation	Total	YoY	Total	YoY	Total	YoY	Cat	Dog	Total
<b>Total</b>	4287	-10.0%	3146	-30.9%	7433	-20.2%	4763	4554	9317
Owner/Guardian Surrender	1238	-8.6%	735	-28.0%	1973	-16.9%	1354	1021	2375
Return	105	-11.8%	147	-34.7%	252	-26.7%	119	225	344
Seized / Custody	352	-25.4%	533	-26.3%	885	-25.9%	472	723	1195
Stray	2090	-8.9%	1139	-29.0%	3229	-17.2%	2294	1605	3899
Transfer In	502	-4.2%	592	-39.6%	1094	-27.3%	524	980	1504
<b>Outcomes</b>									
Outcome Operation	Total	YoY	Total	YoY	Total	YoY	Cat	Dog	Total
<b>Total</b>	3916	-19.6%	3044	-29.7%	6960	-24.4%	4872	4330	9202
Adoption	2511	-4.9%	1548	-31.7%	4059	-17.2%	2640	2265	4905
Died	120	-35.1%	21	-34.4%	141	-35.0%	185	32	217
Euthanasia	526	-59.0%	269	-53.4%	795	-57.3%	1284	577	1861
Return to Owner/Guardian	92	16.5%	508	-11.2%	600	-7.8%	79	572	651
Transfer Out	667	-2.5%	698	-21.0%	1365	-12.9%	684	884	1568
<b>Foster Starts</b>									
Week Starting	Total	YoY	Total	YoY	Total	YoY	Cat	Dog	Total
8/8/2020	1738	16.6%	597	4.2%	2335	13.2%	1490	573	2063
<b>Total Inventory</b>									
Week Starting	Total	YoY	Total	YoY	Total	YoY	Cat	Dog	Total
8/8/2020	24348	-11.9%	12833	-23.2%	37181	-16.1%	27631	16705	44336
<b>In Foster</b>									
Week Starting	Total	YoY	Total	YoY	Total	YoY	Cat	Dog	Total
8/8/2020	8435	11.0%	2930	27.6%	11365	14.8%	7601	2296	9897
<b>In Shelter</b>									
Week Starting	Total	YoY	Total	YoY	Total	YoY	Cat	Dog	Total
8/8/2020	15913	-20.6%	9903	-31.3%	25816	-25.0%	20030	14409	34439