

Week 18: July 17, 2020

The 24Pet® ShelterWatch Report: COVID-19 Impact report is a weekly gauge of U.S. homeless pet populations in the care of animal welfare organizations. Data is aggregated via the PetPoint Animal Management Software, a cloud-based application developed and launched in 2005. PetPoint is the most widely used animal management application in North American animal welfare.

The COVID-19 Impact Report aggregates data from 1191 animal welfare organizations (“AWOs”) in the United States. It compares the weekly data to data from the week before the federal declaration (March 7-13) and same week in 2019.

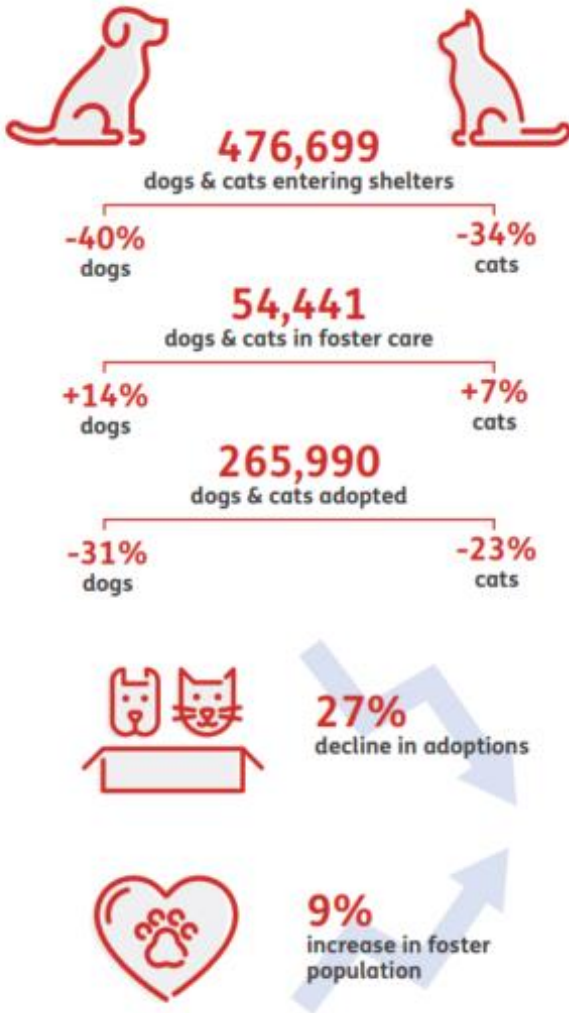
For the purposes here, AWOs are defined as animal control agencies, SPCAs, humane societies and rescue groups. Only data from AWOs operating PetPoint during both January 1, 2019 to current have been included. For commentary see: <https://pethealth.force.com/community/s/blog>

As the world navigates through a new reality, our pet population remains vulnerable and in-need.

Despite temporary closings and reduced shelter capacity, at least 476,699 new animals have arrived in the 1,191 shelters monitored by the 24Pet® ShelterWatch Report since the start of the pandemic. This number is expected to surge in the coming months with an anticipated increase in relinquished and abandoned animals.

March 13 - July 17, 2020 compared to the same period in 2019

US NATIONAL STATS



STATS BY STATE

CALIFORNIA

-41%
dogs & cats entering shelters



foster care

- +11% dogs
- +2% cats

adoption

- 28% dogs
- 22% cats

TEXAS

-37%
dogs & cats entering shelters



foster care

- +5% dogs
- 7% cats

adoption

- 25% dogs
- 16% cats

FLORIDA

-36%
dogs & cats entering shelters



foster care

- +48% dogs
- +20% cats

adoption

- 32% dogs
- 19% cats

Pethealth Services (USA) Inc. ("24PetWatch®") strives to provide accurate and up-to-date material on this 24Pet® ShelterWatch Report (the "Report"). 24PetWatch® assumes no responsibility or does not guarantee as to the accuracy or timeliness of the material provided in this Report. Neither 24PetWatch®, its employees, officers, directors, agents, parent companies or subsidiary companies assume any liability or responsibility for any errors or omissions on any information provided within this Report.

NATIONAL:

										March 7-13, 2020			Same Week 2019		
	Cat			Dog			Total			Cat	Dog	Total	Cat	Dog	Total
Intakes															
Intake Operation	Total	Wk Chg	YoY	Total	Wk Chg	YoY	Total	Wk Chg	YoY	Cat	Dog	Total	Cat	Dog	Total
Total	13638	9.7%	-38.0%	10837	-40.0%	-43.7%	24475	-19.7%	-40.6%	12428	18060	30488	21985	19242	41227
Owner/Guardian Surrender	4050	1.3%	-34.0%	2640	-42.2%	-43.2%	6690	-21.9%	-38.0%	3997	4565	8562	6136	4648	10784
Return	333	-41.3%	-44.1%	547	-45.8%	-46.3%	880	-44.2%	-45.5%	567	1010	1577	596	1019	1615
Seized / Custody	825	4.0%	-39.2%	1227	-40.0%	-50.0%	2052	-27.7%	-46.2%	793	2044	2837	1357	2454	3811
Stray	6622	26.6%	-40.6%	3719	-37.8%	-45.7%	10341	-7.8%	-42.6%	5232	5980	11212	11148	6855	18003
Transfer In	1808	-1.7%	-34.2%	2704	-39.4%	-36.6%	4512	-28.4%	-35.7%	1839	4461	6300	2748	4266	7014
Outcomes															
Outcome Operation	Total	Wk Chg	YoY	Total	Wk Chg	YoY	Total	Wk Chg	YoY	Cat	Dog	Total	Cat	Dog	Total
Total	13605	16.8%	-36.2%	10960	-40.4%	-43.0%	24565	-18.2%	-39.4%	11647	18382	30029	21328	19234	40562
Adoption	9453	24.1%	-27.3%	6207	-39.6%	-39.5%	15660	-12.5%	-32.7%	7616	10281	17897	13002	10263	23265
Died	346	94.4%	-60.2%	94	-38.6%	-39.4%	440	32.9%	-57.1%	178	153	331	870	155	1025
Euthanasia	1798	10.9%	-60.5%	884	-48.0%	-62.4%	2682	-19.3%	-61.1%	1622	1700	3322	4550	2349	6899
Return to Owner/Guardian	350	-13.6%	-42.4%	1935	-34.8%	-38.5%	2285	-32.3%	-39.1%	405	2969	3374	608	3144	3752
Transfer Out	1658	-9.2%	-27.9%	1840	-43.9%	-44.6%	3498	-31.5%	-37.8%	1826	3279	5105	2298	3323	5621
Foster Starts															
Week Starting	Total	Wk Chg	YoY	Total	Wk Chg	YoY	Total	Wk Chg	YoY	Cat	Dog	Total	Cat	Dog	Total
7/11/2020	4829	93.9%	-26.6%	2134	-30.3%	-24.1%	6963	25.4%	-25.8%	2491	3062	5553	6577	2813	9390
Total Inventory															
Week Starting	Total	Wk Chg	YoY	Total	Wk Chg	YoY	Total	Wk Chg	YoY	Cat	Dog	Total	Cat	Dog	Total
7/11/2020	101069	58.8%	-14.5%	54374	-21.0%	-21.7%	155443	17.3%	-17.2%	63629	68838	132467	118277	69450	187727
In Foster															
Week Starting	Total	Wk Chg	YoY	Total	Wk Chg	YoY	Total	Wk Chg	YoY	Cat	Dog	Total	Cat	Dog	Total
7/11/2020	37902	151.8%	8.0%	15075	-2.8%	15.3%	52977	73.4%	10.0%	15050	15510	30560	35087	13073	48160
In Shelter															
Week Starting	Total	Wk Chg	YoY	Total	Wk Chg	YoY	Total	Wk Chg	YoY	Cat	Dog	Total	Cat	Dog	Total
7/11/2020	63167	30.0%	-24.1%	39299	-26.3%	-30.3%	102466	0.5%	-26.6%	48579	53328	101907	83190	56377	139567

For more information please contact: Steve Zeidman
 Senior Vice President, Software Solutions
 Pethealth Inc.
 steve.zeidman@Pethealthinc.com

Mountain (AZ, CO, ID, MT, NM, NV, UT, WY):

	Cat			Dog			Total			March 7-13, 2020			Same Week 2019		
	Total	Wk Chg	YoY	Total	Wk Chg	YoY	Total	Wk Chg	YoY	Cat	Dog	Total	Cat	Dog	Total
Intakes															
Intake Operation	892	14.7%	-45.5%	999	-32.1%	-39.6%	1891	-15.9%	-42.5%	778	1471	2249	1636	1653	3289
Owner/Guardian Surrender	240	0.0%	-50.5%	224	-29.3%	-40.6%	464	-16.7%	-46.2%	240	317	557	485	377	862
Return	31	-36.7%	-58.1%	46	-45.2%	-52.6%	77	-42.1%	-55.0%	49	84	133	74	97	171
Seized / Custody	72	-5.3%	-25.0%	112	-46.9%	-56.1%	184	-35.9%	-47.6%	76	211	287	96	255	351
Stray	426	37.0%	-42.0%	361	-13.0%	-36.1%	787	8.4%	-39.5%	311	415	726	735	565	1300
Transfer In	123	20.6%	-50.0%	256	-42.3%	-28.7%	379	-30.6%	-37.4%	102	444	546	246	359	605
Outcomes															
Outcome Operation	919	8.0%	-45.3%	965	-38.7%	-42.1%	1884	-22.3%	-43.7%	851	1573	2424	1680	1666	3346
Adoption	721	19.4%	-39.9%	551	-37.4%	-41.5%	1272	-14.3%	-40.6%	604	880	1484	1200	942	2142
Died	17	30.8%	-69.1%	5	0.0%	-44.4%	22	22.2%	-65.6%	13	5	18	55	9	64
Euthanasia	71	-29.7%	-77.7%	61	-21.8%	-52.0%	132	-26.3%	-70.4%	101	78	179	319	127	446
Return to Owner/Guardian	31	34.8%	-32.6%	245	-29.4%	-46.6%	276	-25.4%	-45.3%	23	347	370	46	459	505
Transfer Out	79	-28.2%	31.7%	103	-60.8%	-20.2%	182	-51.2%	-3.7%	110	263	373	60	129	189
Foster Starts															
Week Starting															
7/11/2020	293	123.7%	-46.8%	153	19.5%	-19.0%	446	72.2%	-39.7%	131	128	259	551	189	740
Total Inventory															
Week Starting															
7/11/2020	7175	43.1%	-17.9%	4729	-11.2%	-12.2%	11904	15.1%	-15.8%	5014	5325	10339	8744	5389	14133
In Foster															
Week Starting															
7/11/2020	2545	137.9%	0.3%	963	-12.0%	5.2%	3508	62.1%	1.6%	1070	1094	2164	2538	915	3453
In Shelter															
Week Starting															
7/11/2020	4630	17.4%	-25.4%	3766	-11.0%	-15.8%	8396	2.7%	-21.4%	3944	4231	8175	6206	4474	10680

West North Central (IA, KS, MN, MO, ND, NE, SD):

	Cat			Dog			Total			March 7-13, 2020			Same Week 2019		
	Total	Wk Chg	YoY	Total	Wk Chg	YoY	Total	Wk Chg	YoY	Cat	Dog	Total	Cat	Dog	Total
Intakes															
Intake Operation	895	-8.8%	-46.7%	640	-50.1%	-52.5%	1535	-32.2%	-49.3%	981	1282	2263	1680	1348	3028
Owner/Guardian Surrender	375	-7.9%	-39.1%	175	-49.7%	-51.4%	550	-27.2%	-43.6%	407	348	755	616	360	976
Return	35	-32.7%	-35.2%	41	-59.8%	-56.4%	76	-50.6%	-48.6%	52	102	154	54	94	148
Seized / Custody	30	-34.8%	-42.3%	68	-34.6%	-62.0%	98	-34.7%	-57.6%	46	104	150	52	179	231
Stray	313	-9.0%	-52.4%	205	-46.8%	-38.8%	518	-28.9%	-47.8%	344	385	729	657	335	992
Transfer In	142	7.6%	-52.8%	151	-56.0%	-60.3%	293	-38.3%	-57.0%	132	343	475	301	380	681
Outcomes															
Outcome Operation	1001	-1.4%	-28.8%	728	-43.3%	-39.5%	1729	-24.8%	-33.7%	1015	1285	2300	1406	1203	2609
Adoption	742	6.0%	-19.2%	426	-50.5%	-42.5%	1168	-25.2%	-29.6%	700	861	1561	918	741	1659
Died	19	26.7%	-75.3%	5	-58.3%	25.0%	24	-11.1%	-70.4%	15	12	27	77	4	81
Euthanasia	94	-36.1%	-58.2%	57	-38.0%	-41.2%	151	-36.8%	-53.1%	147	92	239	225	97	322
Return to Owner/Guardian	32	-30.4%	-48.4%	187	-26.7%	-29.2%	219	-27.2%	-32.8%	46	255	301	62	264	326
Transfer Out	114	6.5%	-8.1%	53	-18.5%	-45.4%	167	-2.9%	-24.4%	107	65	172	124	97	221
Foster Starts															
Week Starting															
7/11/2020	212	24.7%	-51.4%	135	-33.2%	-54.1%	347	-6.7%	-52.5%	170	202	372	436	294	730
Total Inventory															
Week Starting															
7/11/2020	7983	35.2%	-0.9%	3553	-15.6%	-17.7%	11536	14.1%	-6.7%	5904	4209	10113	8054	4316	12370
In Foster															
Week Starting															
7/11/2020	3160	86.3%	25.6%	1621	14.6%	37.0%	4781	53.7%	29.3%	1696	1414	3110	2516	1183	3699
In Shelter															
Week Starting															
7/11/2020	4823	14.6%	-12.9%	1932	-30.9%	-38.3%	6755	-3.5%	-22.1%	4208	2795	7003	5538	3133	8671

East South Central (AL, KY, MS, TN):

Intakes	Intake Operation	Cat			Dog			Total			March 7-13, 2020			Same Week 2019		
		Total	Wk Chg	YoY	Total	Wk Chg	YoY	Total	Wk Chg	YoY	Cat	Dog	Total	Cat	Dog	Total
	Total	872	73.4%	-35.6%	944	-27.7%	-36.6%	1816	0.4%	-36.1%	503	1306	1809	1355	1489	2844
	Owner/Guardian Surrender	379	79.6%	-27.5%	295	-44.5%	-39.5%	674	-9.3%	-33.3%	211	532	743	523	488	1011
	Return	7	-72.0%	-50.0%	38	-13.6%	-26.9%	45	-34.8%	-31.8%	25	44	69	14	52	66
	Seized / Custody	20	-16.7%	-33.3%	108	58.8%	30.1%	128	39.1%	13.3%	24	68	92	30	83	113
	Stray	422	120.9%	-39.4%	349	-25.4%	-41.9%	771	17.0%	-40.6%	191	468	659	696	601	1297
	Transfer In	44	-15.4%	-52.2%	154	-20.6%	-41.9%	198	-19.5%	-44.5%	52	194	246	92	265	357
											March 7-13, 2020			Same Week 2019		
Outcomes	Outcome Operation	Cat			Dog			Total			March 7-13, 2020			Same Week 2019		
		Total	Wk Chg	YoY	Total	Wk Chg	YoY	Total	Wk Chg	YoY	Cat	Dog	Total	Cat	Dog	Total
	Total	893	72.7%	-34.1%	878	-37.1%	-41.5%	1771	-7.4%	-38.0%	517	1396	1913	1355	1502	2857
	Adoption	460	42.4%	-29.6%	351	-30.4%	-37.9%	811	-1.9%	-33.4%	323	504	827	653	565	1218
	Died	14	600.0%	-70.8%	7	-36.4%	-61.1%	21	61.5%	-68.2%	2	11	13	48	18	66
	Euthanasia	265	197.8%	-48.7%	80	-55.8%	-67.6%	345	27.8%	-54.8%	89	181	270	517	247	764
	Return to Owner/Guardian	9	-25.0%	-10.0%	80	-41.2%	-32.8%	89	-39.9%	-31.0%	12	136	148	10	119	129
	Transfer Out	145	59.3%	14.2%	360	-36.2%	-34.9%	505	-22.9%	-25.7%	91	564	655	127	553	680
											March 7-13, 2020			Same Week 2019		
Foster Starts	Week Starting	Cat			Dog			Total			March 7-13, 2020			Same Week 2019		
		Total	Wk Chg	YoY	Total	Wk Chg	YoY	Total	Wk Chg	YoY	Cat	Dog	Total	Cat	Dog	Total
	7/11/2020	293	295.9%	21.6%	173	-22.8%	-7.5%	466	56.4%	8.9%	74	224	298	241	187	428
											March 7, 2020			Same Week 2019		
Total Inventory	Week Starting	Cat			Dog			Total			March 7, 2020			Same Week 2019		
		Total	Wk Chg	YoY	Total	Wk Chg	YoY	Total	Wk Chg	YoY	Cat	Dog	Total	Cat	Dog	Total
	7/11/2020	6005	78.9%	-4.3%	5416	-12.4%	-14.8%	11421	19.7%	-9.6%	3356	6183	9539	6278	6357	12635
											March 7, 2020			Same Week 2019		
In Foster	Week Starting	Cat			Dog			Total			March 7, 2020			Same Week 2019		
		Total	Wk Chg	YoY	Total	Wk Chg	YoY	Total	Wk Chg	YoY	Cat	Dog	Total	Cat	Dog	Total
	7/11/2020	1567	176.9%	10.5%	1027	-17.8%	-7.8%	2594	42.9%	2.4%	566	1249	1815	1418	1114	2532
											March 7, 2020			Same Week 2019		
In Shelter	Week Starting	Cat			Dog			Total			March 7, 2020			Same Week 2019		
		Total	Wk Chg	YoY	Total	Wk Chg	YoY	Total	Wk Chg	YoY	Cat	Dog	Total	Cat	Dog	Total
	7/11/2020	4438	59.1%	-8.7%	4389	-11.0%	-16.3%	8827	14.3%	-12.6%	2790	4934	7724	4860	5243	10103

New England (CT, MA, ME, NH, RI, VT):

Intakes	Intake Operation	Cat			Dog			Total			March 7-13, 2020			Same Week 2019		
		Total	Wk Chg	YoY	Total	Wk Chg	YoY	Total	Wk Chg	YoY	Cat	Dog	Total	Cat	Dog	Total
	Total	549	-6.3%	-32.4%	389	-27.4%	-26.9%	938	-16.4%	-30.2%	586	536	1122	812	532	1344
	Owner/Guardian Surrender	204	-4.2%	-36.6%	80	12.7%	-25.9%	284	0.0%	-34.0%	213	71	284	322	108	430
	Return	13	-51.9%	-62.9%	12	-65.7%	-65.7%	25	-59.7%	-64.3%	27	35	62	35	35	70
	Seized / Custody	5	0.0%	-50.0%	5	-72.2%	-66.7%	10	-56.5%	-60.0%	5	18	23	10	15	25
	Stray	125	-2.3%	-53.7%	129	30.3%	20.6%	254	11.9%	-32.6%	128	99	227	270	107	377
	Transfer In	202	-5.2%	15.4%	163	-47.9%	-39.0%	365	-30.6%	-17.4%	213	313	526	175	267	442
											March 7-13, 2020			Same Week 2019		
Outcomes	Outcome Operation	Cat			Dog			Total			March 7-13, 2020			Same Week 2019		
		Total	Wk Chg	YoY	Total	Wk Chg	YoY	Total	Wk Chg	YoY	Cat	Dog	Total	Cat	Dog	Total
	Total	489	5.6%	-35.7%	327	-30.4%	-41.7%	816	-12.5%	-38.3%	463	470	933	761	561	1322
	Adoption	421	5.0%	-36.2%	257	-32.7%	-41.9%	678	-13.4%	-38.5%	401	382	783	660	442	1102
	Died	4	-50.0%	-66.7%		-100.0%		4	-55.6%	-66.7%	8	1	9	12		12
	Euthanasia	24	-20.0%	-48.9%	13	-35.0%	-66.7%	37	-26.0%	-57.0%	30	20	50	47	39	86
	Return to Owner/Guardian	18	28.6%	-33.3%	55	10.0%	-12.7%	73	14.1%	-18.9%	14	50	64	27	63	90
	Transfer Out	22	120.0%	46.7%	2	-88.2%	-88.2%	24	-11.1%	-25.0%	10	17	27	15	17	32
											March 7-13, 2020			Same Week 2019		
Foster Starts	Week Starting	Cat			Dog			Total			March 7-13, 2020			Same Week 2019		
		Total	Wk Chg	YoY	Total	Wk Chg	YoY	Total	Wk Chg	YoY	Cat	Dog	Total	Cat	Dog	Total
	7/11/2020	110	5.8%	-56.7%	67	1.5%	-22.1%	177	4.1%	-47.9%	104	66	170	254	86	340
											March 7, 2020			Same Week 2019		
Total Inventory	Week Starting	Cat			Dog			Total			March 7, 2020			Same Week 2019		
		Total	Wk Chg	YoY	Total	Wk Chg	YoY	Total	Wk Chg	YoY	Cat	Dog	Total	Cat	Dog	Total
	7/11/2020	2762	23.7%	-31.4%	1227	-25.6%	-32.5%	3989	2.7%	-31.7%	2233	1650	3883	4024	1818	5842
											March 7, 2020			Same Week 2019		
In Foster	Week Starting	Cat			Dog			Total			March 7, 2020			Same Week 2019		
		Total	Wk Chg	YoY	Total	Wk Chg	YoY	Total	Wk Chg	YoY	Cat	Dog	Total	Cat	Dog	Total
	7/11/2020	1004	75.2%	-14.8%	352	-8.3%	-27.0%	1356	41.7%	-18.3%	573	384	957	1178	482	1660
											March 7, 2020			Same Week 2019		
In Shelter	Week Starting	Cat			Dog			Total			March 7, 2020			Same Week 2019		
		Total	Wk Chg	YoY	Total	Wk Chg	YoY	Total	Wk Chg	YoY	Cat	Dog	Total	Cat	Dog	Total
	7/11/2020	1758	5.9%	-38.2%	875	-30.9%	-34.5%	2633	-10.0%	-37.0%	1660	1266	2926	2846	1336	4182

Middle Atlantic (NJ, NY, PA):

Intakes	Intake Operation	Cat			Dog			Total			March 7-13, 2020			Same Week 2019		
		Total	Wk Chg	YoY	Total	Wk Chg	YoY	Total	Wk Chg	YoY	Cat	Dog	Total	Cat	Dog	Total
Total		1407	2.6%	-34.8%	853	-39.1%	-41.8%	2260	-18.5%	-37.6%	1372	1400	2772	2159	1465	3624
Owner/Guardian Surrender		350	-23.4%	-27.4%	155	-54.3%	-47.3%	505	-36.6%	-34.9%	457	339	796	482	294	776
Return		34	-58.5%	-55.3%	52	-44.7%	-38.8%	86	-51.1%	-46.6%	82	94	176	76	85	161
Seized / Custody		56	16.7%	-52.9%	47	-26.6%	-56.5%	103	-8.0%	-54.6%	48	64	112	119	108	227
Stray		813	28.6%	-36.7%	230	-46.3%	-51.1%	1043	-1.6%	-40.5%	632	428	1060	1284	470	1754
Transfer In		154	0.7%	-22.2%	369	-22.3%	-27.4%	523	-16.7%	-25.9%	153	475	628	198	508	706

Outcomes	Outcome Operation	Cat			Dog			Total			March 7-13, 2020			Same Week 2019		
		Total	Wk Chg	YoY	Total	Wk Chg	YoY	Total	Wk Chg	YoY	Cat	Dog	Total	Cat	Dog	Total
Total		1185	-7.9%	-43.7%	788	-41.5%	-39.0%	1973	-25.1%	-41.9%	1286	1348	2634	2103	1292	3395
Adoption		861	-1.9%	-32.9%	587	-39.4%	-27.4%	1448	-21.6%	-30.8%	878	969	1847	1284	808	2092
Died		40	29.0%	-53.5%	6	100.0%	20.0%	46	35.3%	-49.5%	31	3	34	86	5	91
Euthanasia		144	19.0%	-60.4%	66	-33.3%	-54.8%	210	-4.5%	-58.8%	121	99	220	364	146	510
Return to Owner/Guardian		24	-17.2%	-35.1%	119	-43.1%	-51.8%	143	-39.9%	-49.6%	29	209	238	37	247	284
Transfer Out		116	-48.9%	-65.1%	10	-85.3%	-88.4%	126	-57.3%	-69.9%	227	68	295	332	86	418

Foster Starts	Week Starting	Cat			Dog			Total			March 7-13, 2020			Same Week 2019		
		Total	Wk Chg	YoY	Total	Wk Chg	YoY	Total	Wk Chg	YoY	Cat	Dog	Total	Cat	Dog	Total
	7/11/2020	584	112.4%	-31.2%	150	-32.7%	-17.6%	734	47.4%	-28.8%	275	223	498	849	182	1031

Total Inventory	Week Starting	Cat			Dog			Total			March 7, 2020			Same Week 2019		
		Total	Wk Chg	YoY	Total	Wk Chg	YoY	Total	Wk Chg	YoY	Cat	Dog	Total	Cat	Dog	Total
	7/11/2020	11199	57.3%	-20.3%	3958	-21.9%	-26.7%	15157	24.3%	-22.1%	7120	5071	12191	14052	5403	19455

In Foster	Week Starting	Cat			Dog			Total			March 7, 2020			Same Week 2019		
		Total	Wk Chg	YoY	Total	Wk Chg	YoY	Total	Wk Chg	YoY	Cat	Dog	Total	Cat	Dog	Total
	7/11/2020	4505	161.2%	1.5%	1193	12.4%	23.6%	5698	104.5%	5.4%	1725	1061	2786	4439	965	5404

In Shelter	Week Starting	Cat			Dog			Total			March 7, 2020			Same Week 2019		
		Total	Wk Chg	YoY	Total	Wk Chg	YoY	Total	Wk Chg	YoY	Cat	Dog	Total	Cat	Dog	Total
	7/11/2020	6694	24.1%	-30.4%	2765	-31.0%	-37.7%	9459	0.6%	-32.7%	5395	4010	9405	9613	4438	14051

South Atlantic (DE, FL, GA, MD, NC, SC, VA, WV):

Intakes	Intake Operation	Cat			Dog			Total			March 7-13, 2020			Same Week 2019		
		Total	Wk Chg	YoY	Total	Wk Chg	YoY	Total	Wk Chg	YoY	Cat	Dog	Total	Cat	Dog	Total
Total		3479	14.4%	-32.2%	2280	-43.3%	-47.6%	5759	-18.5%	-39.3%	3040	4024	7064	5135	4353	9488
Owner/Guardian Surrender		985	17.3%	-28.3%	543	-47.0%	-49.3%	1528	-18.0%	-37.5%	840	1024	1864	1373	1070	2443
Return		61	-40.8%	-52.3%	126	-31.9%	-46.4%	187	-35.1%	-48.5%	103	185	288	128	235	363
Seized / Custody		369	26.4%	-32.9%	381	-42.5%	-45.3%	750	-21.5%	-39.8%	292	663	955	550	696	1246
Stray		1620	30.4%	-34.8%	788	-35.7%	-46.8%	2408	-2.4%	-39.3%	1242	1226	2468	2485	1482	3967
Transfer In		444	-21.1%	-25.9%	442	-52.3%	-49.2%	886	-40.5%	-39.7%	563	926	1489	599	870	1469

Outcomes	Outcome Operation	Cat			Dog			Total			March 7-13, 2020			Same Week 2019		
		Total	Wk Chg	YoY	Total	Wk Chg	YoY	Total	Wk Chg	YoY	Cat	Dog	Total	Cat	Dog	Total
Total		3343	14.8%	-39.3%	2320	-42.3%	-47.5%	5663	-18.3%	-42.9%	2912	4021	6933	5506	4419	9925
Adoption		2128	31.0%	-29.3%	1245	-40.1%	-46.8%	3373	-8.9%	-37.0%	1625	2078	3703	3012	2342	5354
Died		88	95.6%	-65.9%	12	-61.3%	-58.6%	100	31.6%	-65.2%	45	31	76	258	29	287
Euthanasia		560	12.4%	-59.3%	205	-49.0%	-64.7%	765	-15.0%	-60.9%	498	402	900	1376	581	1957
Return to Owner/Guardian		53	-24.3%	-56.6%	378	-38.0%	-34.6%	431	-36.6%	-38.4%	70	610	680	122	578	700
Transfer Out		514	-23.7%	-30.4%	480	-46.7%	-46.0%	994	-36.8%	-38.9%	674	900	1574	738	889	1627

Foster Starts	Week Starting	Cat			Dog			Total			March 7-13, 2020			Same Week 2019		
		Total	Wk Chg	YoY	Total	Wk Chg	YoY	Total	Wk Chg	YoY	Cat	Dog	Total	Cat	Dog	Total
	7/11/2020	1341	107.6%	-7.8%	390	-42.4%	-29.2%	1731	30.8%	-13.7%	646	677	1323	1454	551	2005

Total Inventory	Week Starting	Cat			Dog			Total			March 7, 2020			Same Week 2019		
		Total	Wk Chg	YoY	Total	Wk Chg	YoY	Total	Wk Chg	YoY	Cat	Dog	Total	Cat	Dog	Total
	7/11/2020	25225	80.4%	-9.9%	12677	-21.4%	-22.9%	37902	25.9%	-14.7%	13985	16123	30108	28007	16439	44446

In Foster	Week Starting	Cat			Dog			Total			March 7, 2020			Same Week 2019		
		Total	Wk Chg	YoY	Total	Wk Chg	YoY	Total	Wk Chg	YoY	Cat	Dog	Total	Cat	Dog	Total
	7/11/2020	9143	216.8%	15.2%	2821	5.8%	28.1%	11964	115.5%	18.0%	2886	2667	5553	7939	2203	10142

In Shelter	Week Starting	Cat			Dog			Total			March 7, 2020			Same Week 2019		
		Total	Wk Chg	YoY	Total	Wk Chg	YoY	Total	Wk Chg	YoY	Cat	Dog	Total	Cat	Dog	Total
	7/11/2020	16082	44.9%	-19.9%	9856	-26.8%	-30.8%	25938	5.6%	-24.4%	11099	13456	24555	20068	14236	34304