

**Week 11: May 29, 2020**

The 24Pet® ShelterWatch Report: COVID-19 Impact report is a weekly gauge of U.S. homeless pet populations in the care of animal welfare organizations. Data is aggregated via the PetPoint Animal Management Software, a cloud-based application developed and launched in 2005. PetPoint is the most widely used animal management application in North American animal welfare.

The COVID-19 Impact Report aggregates data from 1191 animal welfare organizations (“AWOs”) in the United States. It compares the weekly data to data from the week before the federal declaration (March 7-13) and same week in 2019.

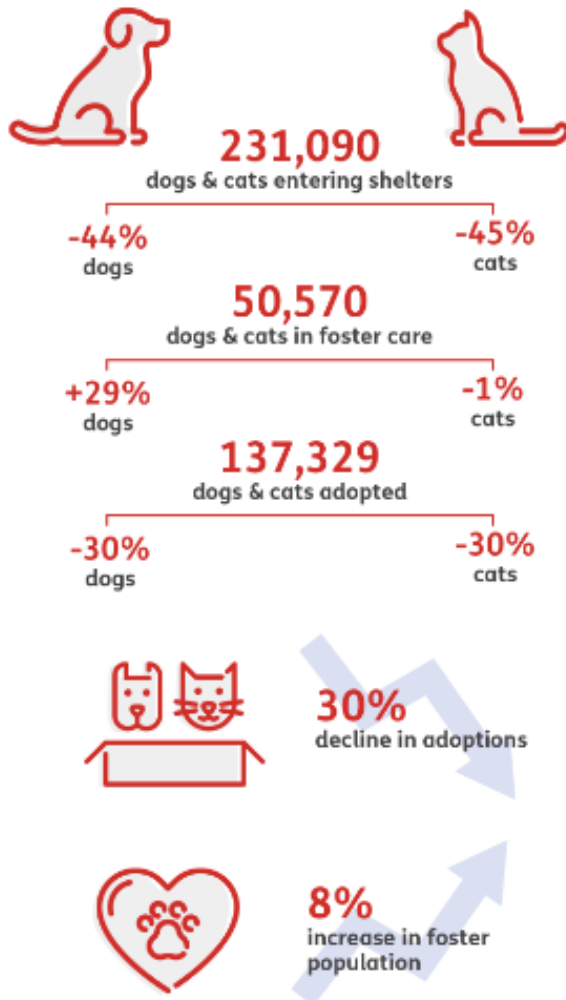
For the purposes here, AWOs are defined as animal control agencies, SPCAs, humane societies and rescue groups. Only data from AWOs operating PetPoint during both January 1, 2019 to current have been included. For commentary see: <https://pethealth.force.com/community/s/blog>

## As the world navigates through a new reality, our pet population remains vulnerable and in-need.

Despite temporary closings and reduced shelter capacity, at least 231,090 new animals have arrived in the 1,191 shelters monitored by the 24Pet® ShelterWatch Report since the start of the pandemic. This number is expected to surge in the coming months with an anticipated increase in relinquished and abandoned animals.

March 13 - May 29, 2020 compared to the same period in 2019

### US NATIONAL STATS



### STATS BY STATE

#### CALIFORNIA



#### ILLINOIS



#### NEW YORK



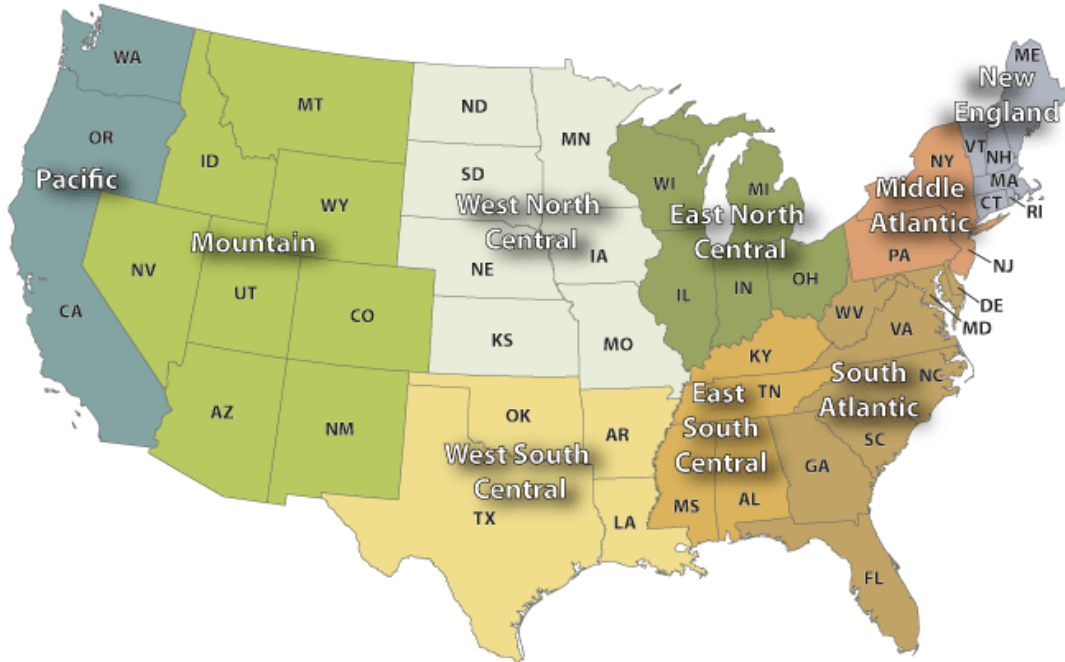
**NATIONAL:**

										March 7-13, 2020			Same Week 2019		
	Cat			Dog			Total			Cat	Dog	Total	Cat	Dog	Total
<b>Intakes</b>															
Intake Operation	Total	Wk Chg	YoY	Total	Wk Chg	YoY	Total	Wk Chg	YoY	Cat	Dog	Total	Cat	Dog	Total
<b>Total</b>	15860	27.9%	-29.3%	11492	-36.3%	-33.6%	27352	-10.2%	-31.2%	12396	18049	30445	22427	17304	39731
Owner/Guardian Surrender	4290	7.4%	-29.0%	3011	-33.9%	-27.4%	7301	-14.6%	-28.3%	3993	4558	8551	6042	4146	10188
Return	322	-43.2%	-45.5%	685	-32.2%	-32.3%	1007	-36.1%	-37.2%	567	1010	1577	591	1012	1603
Seized / Custody	826	4.2%	-29.4%	1362	-33.4%	-40.4%	2188	-22.9%	-36.7%	793	2045	2838	1170	2285	3455
Stray	8050	54.7%	-28.9%	4099	-31.4%	-31.5%	12149	8.6%	-29.8%	5205	5977	11182	11330	5980	17310
Transfer In	2372	29.1%	-28.0%	2335	-47.6%	-39.8%	4707	-25.3%	-34.4%	1838	4459	6297	3294	3881	7175
<b>Outcomes</b>															
Outcome Operation	Total	Wk Chg	YoY	Total	Wk Chg	YoY	Total	Wk Chg	YoY	Cat	Dog	Total	Cat	Dog	Total
<b>Total</b>	10839	-6.9%	-35.5%	11143	-39.4%	-34.7%	21982	-26.8%	-35.1%	11646	18381	30027	16796	17066	33862
Adoption	6428	-15.6%	-26.9%	6051	-41.1%	-32.5%	12479	-30.3%	-29.7%	7616	10280	17896	8791	8959	17750
Died	365	106.2%	-61.0%	92	-39.9%	-47.4%	457	38.5%	-58.8%	177	153	330	935	175	1110
Euthanasia	1672	3.1%	-57.7%	1005	-40.9%	-50.8%	2677	-19.4%	-55.4%	1622	1700	3322	3954	2043	5997
Return to Owner/Guardian	285	-29.6%	-42.7%	2103	-29.2%	-28.8%	2388	-29.2%	-30.8%	405	2969	3374	497	2955	3452
Transfer Out	2089	14.4%	-20.2%	1892	-42.3%	-35.5%	3981	-22.0%	-28.3%	1826	3279	5105	2619	2934	5553
<b>Foster Starts</b>															
Week Starting	Total	Wk Chg	YoY	Total	Wk Chg	YoY	Total	Wk Chg	YoY	Cat	Dog	Total	Cat	Dog	Total
5/23/2020	6390	160.2%	-14.3%	2530	-17.4%	-1.7%	8920	61.7%	-11.1%	2456	3062	5518	7458	2575	10033
<b>Total Inventory</b>															
Week Starting	Total	Wk Chg	YoY	Total	Wk Chg	YoY	Total	Wk Chg	YoY	Cat	Dog	Total	Cat	Dog	Total
5/23/2020	80191	22.7%	-22.6%	52129	-25.6%	-23.1%	132320	-2.3%	-22.8%	65342	70042	135384	103567	67822	171389
<b>In Foster</b>															
Week Starting	Total	Wk Chg	YoY	Total	Wk Chg	YoY	Total	Wk Chg	YoY	Cat	Dog	Total	Cat	Dog	Total
5/23/2020	33947	121.2%	-0.7%	16623	5.1%	29.3%	50570	62.3%	7.5%	15345	15809	31154	34183	12860	47043
<b>In Shelter</b>															
Week Starting	Total	Wk Chg	YoY	Total	Wk Chg	YoY	Total	Wk Chg	YoY	Cat	Dog	Total	Cat	Dog	Total
5/23/2020	46244	-7.5%	-33.4%	35506	-34.5%	-35.4%	81750	-21.6%	-34.3%	49997	54233	104230	69384	54962	124346

For more information please contact: Steve Zeidman  
 Senior Vice President, Software Solutions  
 Pethealth Inc.  
 steve.zeidman@Pethealthinc.com

REGIONAL:

U.S. Census Divisions



Pacific (AK, CA, HI, OR, WA):

Intakes	Intake Operation	Cat			Dog			Total		
		Total	Wk Chg	YoY	Total	Wk Chg	YoY	Total	Wk Chg	YoY
<b>Total</b>		1794	24.2%	-36.6%	1089	-45.2%	-41.5%	2883	-16.0%	-38.5%
	Owner/Guardian Surrender	362	-10.6%	-30.1%	276	-44.6%	-36.6%	638	-29.3%	-33.1%
	Return	26	-50.9%	-54.4%	49	-51.5%	-50.0%	75	-51.3%	-51.6%
	Seized / Custody	51	-44.6%	-73.8%	109	-48.6%	-54.2%	160	-47.4%	-63.0%
	Stray	1031	44.2%	-29.2%	483	-33.0%	-28.2%	1514	5.4%	-28.9%
	Transfer In	324	81.0%	-46.3%	172	-62.4%	-58.7%	496	-22.0%	-51.3%

March 7-13, 2020			Same Week 2019		
Cat	Dog	Total	Cat	Dog	Total
1444	1989	3433	2830	1860	4690
405	498	903	518	435	953
53	101	154	57	98	155
92	212	304	195	238	433
715	721	1436	1457	673	2130
179	457	636	603	416	1019

Outcomes	Outcome Operation	Cat			Dog			Total		
		Total	Wk Chg	YoY	Total	Wk Chg	YoY	Total	Wk Chg	YoY
<b>Total</b>		1279	-4.1%	-40.5%	1065	-45.8%	-45.6%	2344	-28.9%	-43.0%
	Adoption	783	-7.2%	-29.3%	586	-41.5%	-38.7%	1369	-25.8%	-33.6%
	Died	40	233.3%	-46.7%	7	-30.0%	-58.8%	47	113.6%	-48.9%
	Euthanasia	226	-15.0%	-62.6%	127	-48.4%	-57.5%	353	-31.1%	-60.9%
	Return to Owner/Guardian	24	-70.0%	-61.9%	222	-32.5%	-35.1%	246	-39.9%	-39.3%
	Transfer Out	206	57.3%	-31.8%	123	-67.6%	-64.2%	329	-35.6%	-49.1%

March 7-13, 2020			Same Week 2019		
Cat	Dog	Total	Cat	Dog	Total
1333	1966	3299	2151	1958	4109
844	1001	1845	1107	956	2063
12	10	22	75	17	92
266	246	512	604	299	903
80	329	409	63	342	405
131	380	511	302	344	646

Foster Starts	Week Starting	Cat			Dog			Total		
		Total	Wk Chg	YoY	Total	Wk Chg	YoY	Total	Wk Chg	YoY
	5/23/2020	938	219.0%	-7.0%	213	-41.5%	-21.4%	1151	74.9%	-10.1%

March 7-13, 2020			Same Week 2019		
Cat	Dog	Total	Cat	Dog	Total
294	364	658	1009	271	1280

Total Inventory	Week Starting	Cat			Dog			Total		
		Total	Wk Chg	YoY	Total	Wk Chg	YoY	Total	Wk Chg	YoY
	5/23/2020	9508	39.9%	-16.3%	4213	-29.3%	-31.3%	13721	7.6%	-21.6%

March 7, 2020			Same Week 2019		
Cat	Dog	Total	Cat	Dog	Total
6795	5961	12756	11364	6134	17498

In Foster	Week Starting	Cat			Dog			Total		
		Total	Wk Chg	YoY	Total	Wk Chg	YoY	Total	Wk Chg	YoY
	5/23/2020	4800	177.5%	7.5%	1433	9.4%	46.2%	6233	105.0%	14.5%

March 7, 2020			Same Week 2019		
Cat	Dog	Total	Cat	Dog	Total
1730	1310	3040	4464	980	5444

In Shelter	Week Starting	Cat			Dog			Total		
		Total	Wk Chg	YoY	Total	Wk Chg	YoY	Total	Wk Chg	YoY
	5/23/2020	4708	-7.0%	-31.8%	2780	-40.2%	-46.1%	7488	-22.9%	-37.9%

March 7, 2020			Same Week 2019		
Cat	Dog	Total	Cat	Dog	Total
5065	4651	9716	6900	5154	12054

## Mountain (AZ, CO, ID, MT, NM, NV, UT, WY):

	Intake Operation	Cat			Dog			Total			March 7-13, 2020			Same Week 2019		
		Total	Wk Chg	YoY	Total	Wk Chg	YoY	Total	Wk Chg	YoY	Cat	Dog	Total	Cat	Dog	Total
<b>Intakes</b>																
<b>Total</b>		1103	42.1%	-39.3%	994	-32.3%	-28.7%	2097	-6.6%	-34.7%	776	1469	2245	1817	1394	3211
Owner/Guardian Surrender		315	31.3%	-33.3%	241	-23.7%	-22.5%	556	0.0%	-29.0%	240	316	556	472	311	783
Return		15	-69.4%	-69.4%	62	-26.2%	-27.1%	77	-42.1%	-42.5%	49	84	133	49	85	134
Seized / Custody		82	7.9%	-9.9%	160	-24.2%	-34.2%	242	-15.7%	-27.5%	76	211	287	91	243	334
Stray		495	60.2%	-39.1%	274	-33.8%	-39.0%	769	6.4%	-39.1%	309	414	723	813	449	1262
Transfer In		196	92.2%	-50.0%	257	-42.1%	-16.0%	453	-17.0%	-35.1%	102	444	546	392	306	698
<b>Outcomes</b>																
<b>Total</b>		758	-10.9%	-43.9%	965	-38.6%	-35.3%	1723	-28.9%	-39.4%	851	1572	2423	1350	1491	2841
Adoption		506	-16.2%	-43.5%	546	-38.0%	-36.2%	1052	-29.1%	-40.0%	604	880	1484	896	856	1752
Died		24	84.6%	-63.1%	4	-20.0%	-42.9%	28	55.6%	-61.1%	13	5	18	65	7	72
Euthanasia		87	-13.9%	-62.3%	58	-25.6%	-47.7%	145	-19.0%	-57.6%	101	78	179	231	111	342
Return to Owner/Guardian		28	21.7%	-47.2%	234	-32.4%	-41.2%	262	-29.0%	-41.9%	23	346	369	53	398	451
Transfer Out		113	2.7%	7.6%	123	-53.2%	3.4%	236	-36.7%	5.4%	110	263	373	105	119	224
<b>Foster Starts</b>																
<b>Total</b>		438	239.5%	-45.1%	121	-4.7%	-22.4%	559	118.4%	-41.4%	129	127	256	798	156	954
<b>Total Inventory</b>																
<b>Total</b>		5938	15.2%	-24.3%	4309	-20.4%	-20.9%	10247	-3.1%	-22.9%	5156	5415	10571	7847	5446	13293
<b>In Foster</b>																
<b>Total</b>		2237	103.2%	-18.4%	1034	-7.0%	19.0%	3271	47.8%	-9.4%	1101	1112	2213	2741	869	3610
<b>In Shelter</b>																
<b>Total</b>		3701	-8.7%	-27.5%	3275	-23.9%	-28.4%	6976	-16.5%	-28.0%	4055	4303	8358	5106	4577	9683

## West North Central (IA, KS, MN, MO, ND, NE, SD):

	Intake Operation	Cat			Dog			Total			March 7-13, 2020			Same Week 2019		
		Total	Wk Chg	YoY	Total	Wk Chg	YoY	Total	Wk Chg	YoY	Cat	Dog	Total	Cat	Dog	Total
<b>Intakes</b>																
<b>Total</b>		1084	10.6%	-24.9%	802	-37.4%	-34.8%	1886	-16.6%	-29.5%	980	1282	2262	1444	1231	2675
Owner/Guardian Surrender		384	-5.7%	-12.3%	218	-37.4%	-27.3%	602	-20.3%	-18.4%	407	348	755	438	300	738
Return		27	-48.1%	-55.0%	61	-40.2%	-35.8%	88	-42.9%	-43.2%	52	102	154	60	95	155
Seized / Custody		45	-2.2%	-45.1%	64	-38.5%	-61.7%	109	-27.3%	-56.2%	46	104	150	82	167	249
Stray		458	33.5%	-25.6%	234	-39.2%	-25.9%	692	-4.9%	-25.8%	343	385	728	616	316	932
Transfer In		170	28.8%	-31.5%	225	-34.4%	-36.3%	395	-16.8%	-34.3%	132	343	475	248	353	601
<b>Outcomes</b>																
<b>Total</b>		667	-34.3%	-42.5%	740	-42.4%	-38.6%	1407	-38.8%	-40.5%	1015	1285	2300	1161	1205	2366
Adoption		444	-36.6%	-39.9%	435	-49.5%	-41.3%	879	-43.7%	-40.6%	700	861	1561	739	741	1480
Died		31	106.7%	-32.6%	2	-83.3%	-77.8%	33	22.2%	-40.0%	15	12	27	46	9	55
Euthanasia		101	-31.3%	-47.7%	51	-44.6%	-41.4%	152	-36.4%	-45.7%	147	92	239	193	87	280
Return to Owner/Guardian		45	-2.2%	-29.7%	175	-31.4%	-35.2%	220	-26.9%	-34.1%	46	255	301	64	270	334
Transfer Out		46	-57.0%	-61.3%	77	18.5%	-21.4%	123	-28.5%	-43.3%	107	65	172	119	98	217
<b>Foster Starts</b>																
<b>Total</b>		418	145.9%	15.2%	233	15.3%	37.1%	651	75.0%	22.1%	170	202	372	363	170	533
<b>Total Inventory</b>																
<b>Total</b>		6348	4.9%	-8.1%	3643	-15.5%	-11.8%	9991	-3.6%	-9.5%	6052	4311	10363	6906	4132	11038
<b>In Foster</b>																
<b>Total</b>		2679	55.5%	17.8%	1710	18.7%	64.3%	4389	38.7%	32.4%	1723	1441	3164	2274	1041	3315
<b>In Shelter</b>																
<b>Total</b>		3669	-15.2%	-20.8%	1933	-32.6%	-37.5%	5602	-22.2%	-27.5%	4329	2870	7199	4632	3091	7723

## West South Central (AR, LA, OK, TX):

Intakes	Intake Operation	Cat			Dog			Total			March 7-13, 2020			Same Week 2019		
		Total	Wk Chg	YoY	Total	Wk Chg	YoY	Total	Wk Chg	YoY	Cat	Dog	Total	Cat	Dog	Total
<b>Total</b>		2471	42.3%	-29.2%	2384	-32.5%	-30.1%	4855	-7.8%	-29.6%	1736	3530	5266	3489	3412	6901
Owner/Guardian Surrender		512	23.4%	-36.9%	616	-24.9%	-27.5%	1128	-8.7%	-32.1%	415	820	1235	812	850	1662
Return		31	-46.6%	-50.8%	137	-26.7%	-23.5%	168	-31.4%	-30.6%	58	187	245	63	179	242
Seized / Custody		230	60.8%	16.8%	288	-43.0%	-47.1%	518	-20.1%	-30.1%	143	505	648	197	544	741
Stray		1434	55.9%	-29.9%	1022	-34.9%	-28.5%	2456	-1.4%	-29.3%	920	1570	2490	2045	1430	3475
Transfer In		264	32.0%	-29.0%	321	-28.3%	-21.5%	585	-9.7%	-25.1%	200	448	648	372	409	781

Outcomes	Outcome Operation	Cat			Dog			Total			March 7-13, 2020			Same Week 2019		
		Total	Wk Chg	YoY	Total	Wk Chg	YoY	Total	Wk Chg	YoY	Cat	Dog	Total	Cat	Dog	Total
<b>Total</b>		1729	31.0%	-39.1%	2277	-35.4%	-33.6%	4006	-17.3%	-36.1%	1320	3523	4843	2841	3429	6270
Adoption		850	11.4%	-20.3%	1087	-36.5%	-27.3%	1937	-21.7%	-24.4%	763	1711	2474	1066	1496	2562
Died		102	277.8%	-61.5%	29	-43.1%	-53.2%	131	67.9%	-59.9%	27	51	78	265	62	327
Euthanasia		374	94.8%	-52.4%	225	-41.3%	-60.0%	599	4.2%	-55.6%	192	383	575	786	563	1349
Return to Owner/Guardian		43	-8.5%	19.4%	410	-33.3%	-23.1%	453	-31.6%	-20.4%	47	615	662	36	533	569
Transfer Out		360	23.7%	-47.7%	526	-31.1%	-32.1%	886	-15.9%	-39.4%	291	763	1054	688	775	1463

Foster Starts	Week Starting	Cat			Dog			Total			March 7-13, 2020			Same Week 2019		
		Total	Wk Chg	YoY	Total	Wk Chg	YoY	Total	Wk Chg	YoY	Cat	Dog	Total	Cat	Dog	Total
	5/23/2020	827	154.5%	-18.3%	506	-17.6%	-12.0%	1333	42.0%	-16.0%	325	614	939	1012	575	1587

Total Inventory	Week Starting	Cat			Dog			Total			March 7, 2020			Same Week 2019		
		Total	Wk Chg	YoY	Total	Wk Chg	YoY	Total	Wk Chg	YoY	Cat	Dog	Total	Cat	Dog	Total
	5/23/2020	9704	32.3%	-30.5%	10046	-29.1%	-27.2%	19750	-8.1%	-28.9%	7336	14165	21501	13970	13800	27770

In Foster	Week Starting	Cat			Dog			Total			March 7, 2020			Same Week 2019		
		Total	Wk Chg	YoY	Total	Wk Chg	YoY	Total	Wk Chg	YoY	Cat	Dog	Total	Cat	Dog	Total
	5/23/2020	5201	94.8%	-4.1%	4112	6.1%	23.6%	9313	42.3%	6.4%	2670	3875	6545	5422	3328	8750

In Shelter	Week Starting	Cat			Dog			Total			March 7, 2020			Same Week 2019		
		Total	Wk Chg	YoY	Total	Wk Chg	YoY	Total	Wk Chg	YoY	Cat	Dog	Total	Cat	Dog	Total
	5/23/2020	4503	-3.5%	-47.3%	5934	-42.3%	-43.3%	10437	-30.2%	-45.1%	4666	10290	14956	8548	10472	19020

## East North Central (IL, IN, MI, OH, WI):

Intakes	Intake Operation	Cat			Dog			Total			March 7-13, 2020			Same Week 2019		
		Total	Wk Chg	YoY	Total	Wk Chg	YoY	Total	Wk Chg	YoY	Cat	Dog	Total	Cat	Dog	Total
<b>Total</b>		2426	23.6%	-29.0%	1744	-30.6%	-34.7%	4170	-6.8%	-31.5%	1963	2513	4476	3417	2671	6088
Owner/Guardian Surrender		663	-18.0%	-39.6%	403	-34.0%	-21.9%	1066	-24.9%	-33.9%	809	611	1420	1097	516	1613
Return		79	-33.1%	-34.7%	111	-37.6%	-32.3%	190	-35.8%	-33.3%	118	178	296	121	164	285
Seized / Custody		61	-9.0%	-49.2%	211	6.0%	-18.2%	272	2.3%	-28.0%	67	199	266	120	258	378
Stray		1221	68.6%	-25.5%	547	-18.0%	-27.9%	1768	27.1%	-26.3%	724	667	1391	1640	759	2399
Transfer In		402	64.1%	-8.4%	472	-45.0%	-51.5%	874	-20.8%	-38.1%	245	858	1103	439	974	1413

Outcomes	Outcome Operation	Cat			Dog			Total			March 7-13, 2020			Same Week 2019		
		Total	Wk Chg	YoY	Total	Wk Chg	YoY	Total	Wk Chg	YoY	Cat	Dog	Total	Cat	Dog	Total
<b>Total</b>		1538	-21.1%	-34.5%	1626	-41.9%	-33.2%	3164	-33.3%	-33.8%	1949	2797	4746	2349	2433	4782
Adoption		1130	-23.5%	-27.0%	1017	-46.2%	-31.7%	2147	-36.3%	-29.4%	1478	1892	3370	1549	1490	3039
Died		42	75.0%	-63.8%	6	-79.3%	-76.9%	48	-9.4%	-66.2%	24	29	53	116	26	142
Euthanasia		148	-16.9%	-57.6%	117	-41.2%	-48.7%	265	-29.7%	-54.1%	178	199	377	349	228	577
Return to Owner/Guardian		56	-33.3%	-58.2%	367	-12.2%	-24.2%	423	-15.7%	-31.6%	84	418	502	134	484	618
Transfer Out		162	-12.4%	-19.4%	119	-54.1%	-42.0%	281	-36.7%	-30.8%	185	259	444	201	205	406

Foster Starts	Week Starting	Cat			Dog			Total			March 7-13, 2020			Same Week 2019		
		Total	Wk Chg	YoY	Total	Wk Chg	YoY	Total	Wk Chg	YoY	Cat	Dog	Total	Cat	Dog	Total
	5/23/2020	928	109.0%	-19.1%	543	-3.2%	49.2%	1471	46.4%	-2.6%	444	561	1005	1147	364	1511

Total Inventory	Week Starting	Cat			Dog			Total			March 7, 2020			Same Week 2019		
		Total	Wk Chg	YoY	Total	Wk Chg	YoY	Total	Wk Chg	YoY	Cat	Dog	Total	Cat	Dog	Total
	5/23/2020	14370	12.9%	-20.9%	7936	-26.1%	-18.6%	22306	-5.0%	-20.1%	12725	10744	23469	18159	9744	27903

In Foster	Week Starting	Cat			Dog			Total			March 7, 2020			Same Week 2019		
		Total	Wk Chg	YoY	Total	Wk Chg	YoY	Total	Wk Chg	YoY	Cat	Dog	Total	Cat	Dog	Total
	5/23/2020	4774	108.7%	-7.2%	2612	-0.6%	29.3%	7386	50.3%	3.1%	2288	2627	4915	5147	2020	7167

In Shelter	Week Starting	Cat			Dog			Total			March 7, 2020			Same Week 2019		
		Total	Wk Chg	YoY	Total	Wk Chg	YoY	Total	Wk Chg	YoY	Cat	Dog	Total	Cat	Dog	Total
	5/23/2020	9596	-8.1%	-26.3%	5324	-34.4%	-31.1%	14920	-19.6%	-28.0%	10437	8117	18554	13012	7724	20736

## East South Central (AL, KY, MS, TN):

	Cat			Dog			Total			March 7-13, 2020			Same Week 2019		
	Total	Wk Chg	YoY	Total	Wk Chg	YoY	Total	Wk Chg	YoY	Cat	Dog	Total	Cat	Dog	Total
<b>Intakes</b>															
Intake Operation															
<b>Total</b>	1063	110.9%	-19.7%	927	-29.0%	-18.9%	1990	9.9%	-19.3%	504	1306	1810	1323	1143	2466
Owner/Guardian Surrender	420	98.1%	-19.7%	363	-31.9%	-19.9%	783	5.1%	-19.8%	212	533	745	523	453	976
Return	17	-32.0%	-32.0%	47	6.8%	-24.2%	64	-7.2%	-26.4%	25	44	69	25	62	87
Seized / Custody	23	-4.2%	4.5%	56	-17.6%	12.0%	79	-14.1%	9.7%	24	68	92	22	50	72
Stray	505	163.0%	-26.2%	317	-32.1%	-28.3%	822	24.7%	-27.0%	192	467	659	684	442	1126
Transfer In	98	92.2%	42.0%	144	-25.8%	5.9%	242	-1.2%	18.0%	51	194	245	69	136	205
<b>Outcomes</b>															
Outcome Operation															
<b>Total</b>	738	42.7%	-31.3%	980	-29.8%	-27.5%	1718	-10.2%	-29.2%	517	1396	1913	1075	1351	2426
Adoption	325	0.6%	-23.7%	396	-21.4%	-13.3%	721	-12.8%	-18.3%	323	504	827	426	457	883
Died	10	400.0%	-76.7%	4	-63.6%	-77.8%	14	7.7%	-77.0%	2	11	13	43	18	61
Euthanasia	211	137.1%	-52.0%	134	-26.0%	-22.5%	345	27.8%	-43.7%	89	181	270	440	173	613
Return to Owner/Guardian	6	-50.0%	-40.0%	92	-32.4%	-13.2%	98	-33.8%	-15.5%	12	136	148	10	106	116
Transfer Out	186	104.4%	19.2%	354	-37.2%	-40.7%	540	-17.6%	-28.3%	91	564	655	156	597	753
<b>Foster Starts</b>															
Week Starting															
5/23/2020	256	236.8%	-19.0%	181	-19.6%	-24.3%	437	45.2%	-21.3%	76	225	301	316	239	555
<b>Total Inventory</b>															
Week Starting															
5/23/2020	4589	31.6%	-14.7%	5495	-13.6%	-14.4%	10084	2.4%	-14.5%	3488	6363	9851	5378	6423	11801
<b>In Foster</b>															
Week Starting															
5/23/2020	1321	130.1%	5.4%	1187	-6.8%	-2.3%	2508	35.8%	1.6%	574	1273	1847	1253	1215	2468
<b>In Shelter</b>															
Week Starting															
5/23/2020	3268	12.1%	-20.8%	4308	-15.4%	-17.3%	7576	-5.3%	-18.8%	2914	5090	8004	4125	5208	9333

## New England (CT, MA, ME, NH, RI, VT):

	Cat			Dog			Total			March 7-13, 2020			Same Week 2019		
	Total	Wk Chg	YoY	Total	Wk Chg	YoY	Total	Wk Chg	YoY	Cat	Dog	Total	Cat	Dog	Total
<b>Intakes</b>															
Intake Operation															
<b>Total</b>	374	-35.6%	-50.3%	283	-47.0%	-44.8%	657	-41.1%	-48.1%	581	534	1115	752	513	1265
Owner/Guardian Surrender	155	-25.5%	-41.3%	68	-1.4%	-19.0%	223	-19.5%	-35.9%	208	69	277	264	84	348
Return	10	-63.0%	-74.4%	15	-57.1%	-40.0%	25	-59.7%	-60.9%	27	35	62	39	25	64
Seized / Custody	11	120.0%	-35.3%	17	-5.6%	70.0%	28	21.7%	3.7%	5	18	23	17	10	27
Stray	143	11.7%	-41.2%	82	-17.2%	-45.7%	225	-0.9%	-42.9%	128	99	227	243	151	394
Transfer In	55	-74.2%	-70.9%	101	-67.7%	-58.4%	156	-70.3%	-63.9%	213	313	526	189	243	432
<b>Outcomes</b>															
Outcome Operation															
<b>Total</b>	283	-38.9%	-42.2%	264	-43.8%	-45.8%	547	-41.4%	-44.0%	463	470	933	490	487	977
Adoption	246	-38.7%	-37.6%	210	-45.0%	-44.0%	456	-41.8%	-40.7%	401	382	783	394	375	769
Died	3	-62.5%	-62.5%	1	0.0%	-50.0%	4	-55.6%	-60.0%	8	1	9	8	2	10
Euthanasia	23	-23.3%	-54.9%	14	-30.0%	-54.8%	37	-26.0%	-54.9%	30	20	50	51	31	82
Return to Owner/Guardian	11	-21.4%	-47.6%	39	-22.0%	-39.1%	50	-21.9%	-41.2%	14	50	64	21	64	85
Transfer Out		-100.0%	-100.0%		-100.0%	-100.0%		-100.0%	-100.0%	10	17	27	16	15	31
<b>Foster Starts</b>															
Week Starting															
5/23/2020	90	-9.1%	-62.8%	53	-19.7%	-29.3%	143	-13.3%	-54.9%	99	66	165	242	75	317
<b>Total Inventory</b>															
Week Starting															
5/23/2020	2338	0.8%	-26.4%	1204	-29.2%	-32.5%	3542	-11.9%	-28.6%	2319	1700	4019	3176	1784	4960
<b>In Foster</b>															
Week Starting															
5/23/2020	970	62.2%	-5.6%	375	-6.5%	-13.2%	1345	34.6%	-7.9%	598	401	999	1028	432	1460
<b>In Shelter</b>															
Week Starting															
5/23/2020	1368	-20.5%	-36.3%	829	-36.2%	-38.7%	2197	-27.3%	-37.2%	1721	1299	3020	2148	1352	3500

## Middle Atlantic (NJ, NY, PA):

Intakes	Intake Operation	Cat			Dog			Total			March 7-13, 2020			Same Week 2019		
		Total	Wk Chg	YoY	Total	Wk Chg	YoY	Total	Wk Chg	YoY	Cat	Dog	Total	Cat	Dog	Total
<b>Total</b>		1220	-11.1%	-41.4%	682	-51.3%	-46.1%	1902	-31.4%	-43.2%	1372	1400	2772	2082	1265	3347
Owner/Guardian Surrender		333	-27.1%	-40.7%	137	-59.6%	-55.1%	470	-41.0%	-45.8%	457	339	796	562	305	867
Return		33	-59.8%	-50.0%	62	-34.0%	-16.2%	95	-46.0%	-32.1%	82	94	176	66	74	140
Seized / Custody		33	-31.3%	-58.2%	27	-57.8%	-75.7%	60	-46.4%	-68.4%	48	64	112	79	111	190
Stray		646	2.2%	-45.9%	258	-39.7%	-38.4%	904	-14.7%	-44.0%	632	428	1060	1194	419	1613
Transfer In		175	14.4%	-3.3%	198	-58.3%	-44.4%	373	-40.6%	-30.5%	153	475	628	181	356	537

Outcomes	Outcome Operation	Cat			Dog			Total			March 7-13, 2020			Same Week 2019		
		Total	Wk Chg	YoY	Total	Wk Chg	YoY	Total	Wk Chg	YoY	Cat	Dog	Total	Cat	Dog	Total
<b>Total</b>		810	-37.0%	-41.5%	796	-41.0%	-28.6%	1606	-39.1%	-35.8%	1286	1349	2635	1385	1115	2500
Adoption		596	-32.1%	-25.0%	554	-42.9%	-21.5%	1150	-37.8%	-23.4%	878	970	1848	795	706	1501
Died		28	-9.7%	-46.2%	17	466.7%	240.0%	45	32.4%	-21.1%	31	3	34	52	5	57
Euthanasia		101	-16.5%	-55.3%	55	-44.4%	-36.8%	156	-29.1%	-50.2%	121	99	220	226	87	313
Return to Owner/Guardian		15	-48.3%	-58.3%	152	-27.3%	-29.6%	167	-29.8%	-33.7%	29	209	238	36	216	252
Transfer Out		70	-69.2%	-74.6%	18	-73.5%	-82.2%	88	-70.2%	-76.7%	227	68	295	276	101	377

Foster Starts	Week Starting	Cat			Dog			Total			March 7-13, 2020			Same Week 2019		
		Total	Wk Chg	YoY	Total	Wk Chg	YoY	Total	Wk Chg	YoY	Cat	Dog	Total	Cat	Dog	Total
	5/23/2020	648	135.6%	-23.5%	138	-38.4%	-22.0%	786	57.5%	-23.2%	275	224	499	847	177	1024

Total Inventory	Week Starting	Cat			Dog			Total			March 7, 2020			Same Week 2019		
		Total	Wk Chg	YoY	Total	Wk Chg	YoY	Total	Wk Chg	YoY	Cat	Dog	Total	Cat	Dog	Total
	5/23/2020	8735	20.8%	-24.4%	3670	-28.6%	-29.9%	12405	0.3%	-26.1%	7230	5139	12369	11551	5238	16789

In Foster	Week Starting	Cat			Dog			Total			March 7, 2020			Same Week 2019		
		Total	Wk Chg	YoY	Total	Wk Chg	YoY	Total	Wk Chg	YoY	Cat	Dog	Total	Cat	Dog	Total
	5/23/2020	4108	135.4%	8.7%	1282	19.0%	39.5%	5390	91.0%	14.7%	1745	1077	2822	3780	919	4699

In Shelter	Week Starting	Cat			Dog			Total			March 7, 2020			Same Week 2019		
		Total	Wk Chg	YoY	Total	Wk Chg	YoY	Total	Wk Chg	YoY	Cat	Dog	Total	Cat	Dog	Total
	5/23/2020	4627	-15.6%	-40.5%	2388	-41.2%	-44.7%	7015	-26.5%	-42.0%	5485	4062	9547	7771	4319	12090

## South Atlantic (DE, FL, GA, MD, NC, SC, VA, WV):

Intakes	Intake Operation	Cat			Dog			Total			March 7-13, 2020			Same Week 2019		
		Total	Wk Chg	YoY	Total	Wk Chg	YoY	Total	Wk Chg	YoY	Cat	Dog	Total	Cat	Dog	Total
<b>Total</b>		4325	42.3%	-18.0%	2587	-35.7%	-32.2%	6912	-2.2%	-23.9%	3040	4026	7066	5273	3815	9088
Owner/Guardian Surrender		1146	36.4%	-15.5%	689	-32.7%	-22.8%	1835	-1.6%	-18.4%	840	1024	1864	1356	892	2248
Return		84	-18.4%	-24.3%	141	-23.8%	-38.7%	225	-21.9%	-34.0%	103	185	288	111	230	341
Seized / Custody		290	-0.7%	-21.0%	430	-35.2%	-35.2%	720	-24.7%	-30.2%	292	664	956	367	664	1031
Stray		2117	70.5%	-19.7%	882	-28.1%	-34.2%	2999	21.5%	-24.6%	1242	1226	2468	2638	1341	3979
Transfer In		688	22.2%	-14.1%	445	-52.0%	-35.3%	1133	-24.0%	-23.9%	563	927	1490	801	688	1489

Outcomes	Outcome Operation	Cat			Dog			Total			March 7-13, 2020			Same Week 2019		
		Total	Wk Chg	YoY	Total	Wk Chg	YoY	Total	Wk Chg	YoY	Cat	Dog	Total	Cat	Dog	Total
<b>Total</b>		3037	4.3%	-24.0%	2430	-39.6%	-32.4%	5467	-21.2%	-28.0%	2912	4023	6935	3994	3597	7591
Adoption		1548	-4.7%	-14.9%	1220	-41.3%	-35.2%	2768	-25.3%	-25.2%	1625	2079	3704	1819	1882	3701
Died		85	88.9%	-67.9%	22	-29.0%	-24.1%	107	40.8%	-63.6%	45	31	76	265	29	294
Euthanasia		401	-19.5%	-62.7%	224	-44.3%	-51.7%	625	-30.6%	-59.4%	498	402	900	1074	464	1538
Return to Owner/Guardian		57	-18.6%	-28.8%	412	-32.6%	-24.0%	469	-31.1%	-24.6%	70	611	681	80	542	622
Transfer Out		946	40.4%	25.1%	552	-38.7%	-18.8%	1498	-4.8%	4.3%	674	900	1574	756	680	1436

Foster Starts	Week Starting	Cat			Dog			Total			March 7-13, 2020			Same Week 2019		
		Total	Wk Chg	YoY	Total	Wk Chg	YoY	Total	Wk Chg	YoY	Cat	Dog	Total	Cat	Dog	Total
	5/23/2020	1847	186.8%	7.1%	542	-20.2%	-1.1%	2389	80.6%	5.1%	644	679	1323	1724	548	2272

Total Inventory	Week Starting	Cat			Dog			Total			March 7, 2020			Same Week 2019		
		Total	Wk Chg	YoY	Total	Wk Chg	YoY	Total	Wk Chg	YoY	Cat	Dog	Total	Cat	Dog	Total
	5/23/2020	18661	31.0%	-26.0%	11613	-28.5%	-23.2%	30274	-0.7%	-24.9%	14241	16244	30485	25216	15121	40337

In Foster	Week Starting	Cat			Dog			Total			March 7, 2020			Same Week 2019		
		Total	Wk Chg	YoY	Total	Wk Chg	YoY	Total	Wk Chg	YoY	Cat	Dog	Total	Cat	Dog	Total
	5/23/2020	7857	169.4%	-2.7%	2878	6.9%	40.0%	10735	91.4%	6.0%	2916	2693	5609	8074	2056	10130

In Shelter	Week Starting	Cat			Dog			Total			March 7, 2020			Same Week 2019		
		Total	Wk Chg	YoY	Total	Wk Chg	YoY	Total	Wk Chg	YoY	Cat	Dog	Total	Cat	Dog	Total
	5/23/2020	10804	-4.6%	-37.0%	8735	-35.5%	-33.1%	19539	-21.5%	-35.3%	11325	13551	24876	17142	13065	30207